



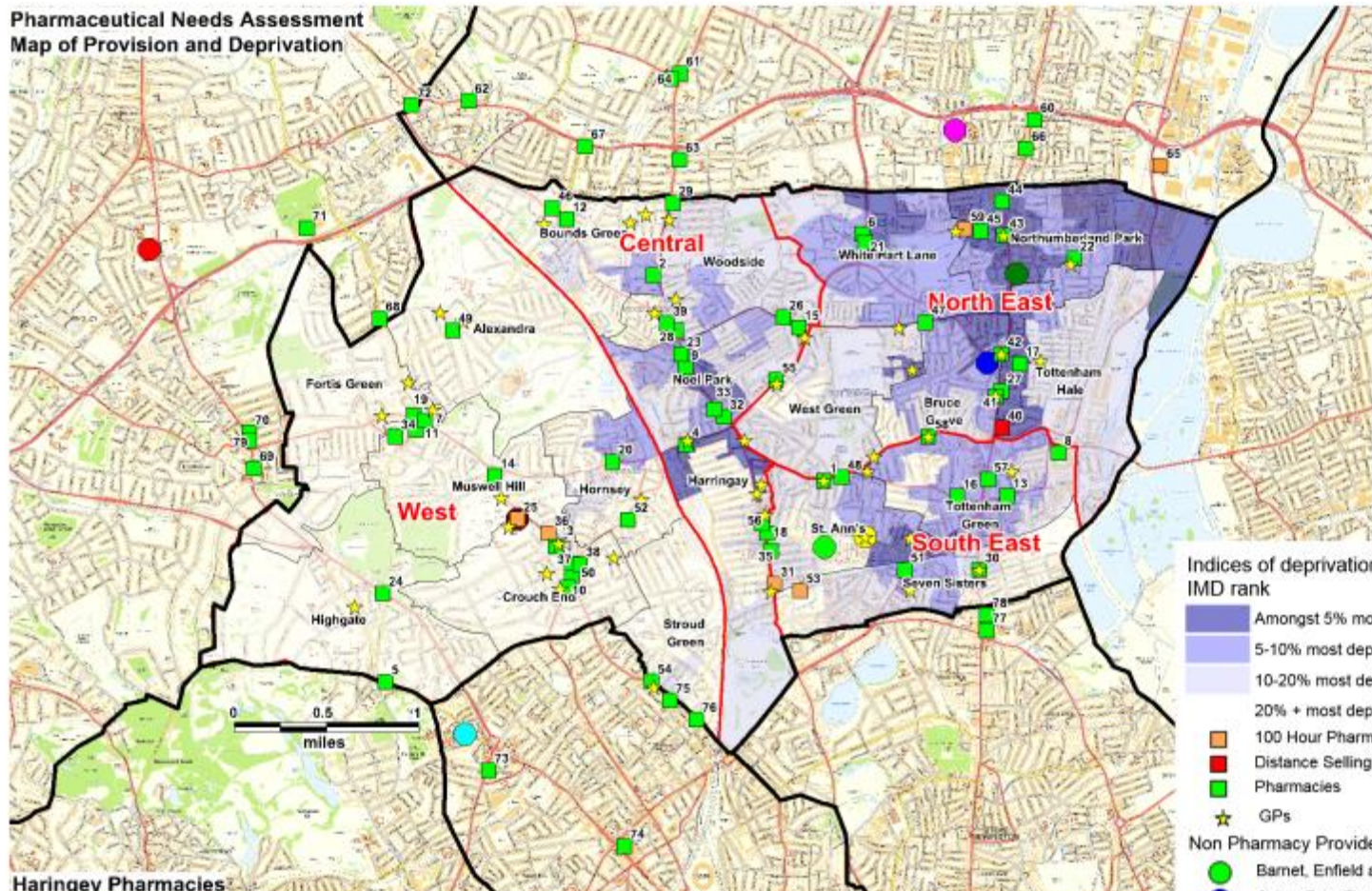
Haringey Council

Pharmaceutical Needs Assessment

Maps

	Description
Map 1	Map of Provision plotted against deprivation
Map 2	Map of Provision plotted against population density
Map 3	Map of Provision plotted against Public Transport Accessibility Levels
Map 4	Pharmacies - Weekday Extended Hours
Map 5	Pharmacies - Open on Saturday
Map 6	Pharmacies - Open on Saturday until 5pm or later
Map 7	Pharmacies - Open on Sunday
Map 8	Pharmacies Providing Medicines Use Reviews
Map 9	Pharmacies Providing the New Medicine Service
Map 10	Pharmacies Providing the Minor Ailments Scheme
Map 11	Pharmacies Providing the London Pharmacy Vaccination Service
Map 12	Pharmacies Providing the Stop Smoking Service
Map 13	Pharmacies Providing Sexual Health Services - Under 25s plotted against young people aged 15-24
Map 14	Pharmacies Providing Sexual Health Services - Under 25s plotted against females age 13 - 24
Map 15	Pharmacies Providing Sexual Health Services - Over 25s
Map 16	Pharmacies Providing the Supervised Consumption Service
Map 17	Pharmacies Providing the Needle Exchange Service
Map 18	Pharmacies Providing the Healthy Start Vitamins Service

**Pharmaceutical Needs Assessment
Map of Provision and Deprivation**



Out of Borough Pharmacies

- 60 - BEES CHEMIST - N18 2JB
- 61 - BOOTS THE CHEMIST - N13 4YB
- 62 - COOPER CHEMISTS - N11 1AH
- 63 - GREENS PHARMACY - N13 6JU
- 64 - MORRISONS PHARMACY - N13 4YD
- 65 - TESCO PHARMACY - N18 3HF
- 66 - WISE PHARMACY - N18 2TW
- 67 - N.R. PATEL CHEMISTS - N13 4SE
- 68 - ABBOTT PHARMACY - N10 1LR
- 69 - C W ANDREW - N2 9PJ
- 70 - COOTES PHARMACY - N2 9ED
- 71 - TESCO PHARMACY - N12 0SH
- 72 - VANTAGE PHARMACY - N11 1NE
- 73 - ARKLE PHARMACY - N19 5QU
- 74 - BOOTS THE CHEMIST - N7 6QA
- 75 - NUICHEM - N4 3PX
- 76 - ROGER DAVIES - N4 3EF
- 77 - BOOTS THE CHEMIST - N16 6TT
- 78 - LANDS CHEMISTS - N16 6TY
- 79 - OAKDALE PHARMACY - N2 8AQ

**Indices of deprivation 2010
IMD rank**

- Amongst 5% most deprived SOAs in England
- 5-10% most deprived
- 10-20% most deprived
- 20% + most deprived
- 100 Hour Pharmacy
- Distance Selling
- Pharmacies
- GPs
- Borough Boundary
- Locality Boundary
- Ward Boundary

Non Pharmacy Providers

- Barnet, Enfield and Haringey Mental Health Trust
- Grove Drug Treatment Service
- The Laurels Healthy Living Centre / Barndoc
- Whittington Health
- Young people's drug and alcohol treatment service

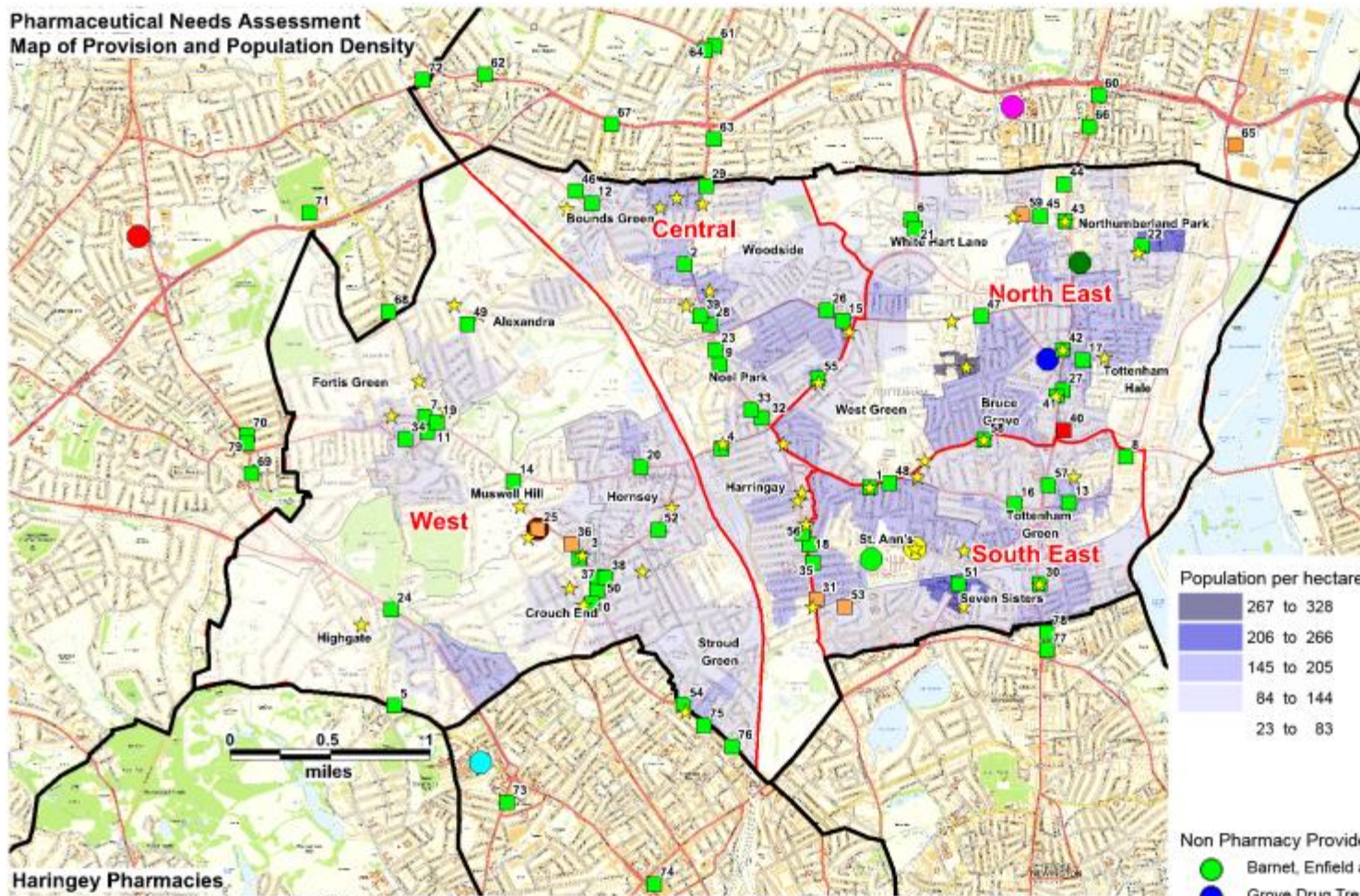
Out of Borough Non Pharmacy Providers

- North Middlesex University Hospital NHS Trust
- The Whittington Hospital NHS Trust
- Barndoc

Haringey Pharmacies

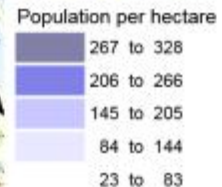
- | | | | |
|--|---|--------------------------------------|--|
| 1 - ALLCURES PHARMACY - N15 3PB | 16 - DOBBER PHARMACY - N15 5NR | 31 - MED-CHEM PHARMACY - N4 1DU | 46 - PHARMOCARE (WARWICK PHARMACY) - N11 2EU - N11 2EU |
| 2 - ALPHA PHARMACY - N22 8ED | 17 - DOVSETT CHEMIST - N17 9OD | 32 - MINTONS CHEMIST - N22 6BH | 47 - PHILLIPS CHEMIST - N17 6XF |
| 3 - AMY PHARMACY - N8 85Y | 18 - SP MARK CHEMIST - N4 1JX | 33 - MORRISONS PHARMACY - N22 6BH | 48 - RAM PHARMACY - N15 5BL |
| 4 - AVENUE PHARMACY - N8 0DU | 19 - DUKES PHARMACY - N10 1DJ | 34 - MUSWELL HILL PHARMACY - N10 3HN | 49 - REDWOOD PHARMACY - N10 2AH |
| 5 - BAILEY & SAUNDERS HIGHGATE PHARMACY - N6 5HX | 20 - FROST & Co. - N8 7PS | 35 - PARADE CHEMIST - N4 1LG | 50 - REBA PHARMACY - N8 8AA |
| 6 - BEAUTYCHEM PHARMACY - N17 7LH | 21 - GF PORTER DISPENSING CHEMIST - N17 7BU | 36 - PARK ROAD PHARMACY - N8 8JR | 51 - SAFEDALE PHARMACY - N15 6EP |
| 7 - BOOTS - N10 1DU | 22 - GRACE PHARMACY - N17 0HJ | 37 - PETTERS PHARMACY - N8 8DT | 52 - SAIGRACE PHARMACY - N8 9BG |
| 8 - BOOTS - N15 4QD | 23 - GREENWOODS PHARMACY - N22 6DS | 38 - PHARMACIA NATURALE - N8 5TN | 53 - SAINSBURY'S PHARMACY - N4 1UJ |
| 9 - BOOTS - N22 6BA | 24 - HAYWARD PHARMACY - N6 4EJ | 39 - PHARMACY EXPRESS - N22 8HH | 54 - SANTAS PHARMACY - N4 3RN |
| 10 - BOOTS - N8 8DU | 25 - HORNSEY CENTRAL PHARMACY - N8 8JD | 40 - PHARMACYWAREHOUSE2U - N17 9EJ | 55 - SAVEMORE PHARMACY - N22 6SA |
| 11 - BROADWAY PHARMACY - N10 3RS | 26 - J LORD CHEMIST - N22 5UJ | 41 - PHARMOCARE - N17 6QB | 56 - STEARNS PHARMACY - N8 0RL |
| 12 - CLOCKWORK PHARMACY - N11 2DN | 27 - LLOYDS PHARMACY - N17 5UD | 42 - PHARMOCARE - N17 6SB | 57 - TESCO INSTORE PHARMACY - N15 4AJ |
| 13 - COOPERS PHARMACY - N15 4DJ | 28 - LLOYDS PHARMACY - N22 8HH | 43 - PHARMOCARE - N17 8AH | 58 - THE CADGE PHARMACY - N15 4JR |
| 14 - CORAL PHARMACY - N8 8LA | 29 - LLOYDS PHARMACY - N22 8JW | 44 - PHARMOCARE - N17 8EY | 59 - SOMERSET GARDENS PHARMACY - N17 8NW |
| 15 - CROSS CHEMIST - N22 5DJ | 30 - MANSONS PHARMACY - N15 6JR | 45 - PHARMOCARE - N17 8HH | |

**Pharmaceutical Needs Assessment
Map of Provision and Population Density**



Out of Borough Pharmacies

- 60 - BEES CHEMIST - N18 2JB
- 61 - BOOTS THE CHEMIST - N13 4YB
- 62 - COOPER CHEMISTS - N11 1AH
- 63 - GREENS PHARMACY - N13 6JU
- 64 - MORRISONS PHARMACY - N13 4YD
- 65 - TESCO PHARMACY - N18 3HF
- 66 - WISE PHARMACY - N18 2TW
- 67 - N.R. PATEL CHEMISTS - N13 4SE
- 68 - ABBOTT PHARMACY - N10 1LR
- 69 - C W ANDREW - N2 9PJ
- 70 - COOTES PHARMACY - N2 9ED
- 71 - TESCO PHARMACY - N12 0SH
- 72 - VANTAGE PHARMACY - N11 1NE
- 73 - ARKLE PHARMACY - N19 5QU
- 74 - BOOTS THE CHEMIST - N7 6QA
- 75 - NUICHEM - N4 3PX
- 76 - ROGER DAVIES - N4 3EF
- 77 - BOOTS THE CHEMIST - N16 6TT
- 78 - LANDS CHEMISTS - N16 6TY
- 79 - OAKDALE PHARMACY - N2 8AQ



- 100 Hour Pharmacy
- Distance Selling
- Pharmacies
- GPs
- Borough Boundary
- Locality Boundary
- Ward Boundary

Haringey Pharmacies

- 1 - ALLCURES PHARMACY - N15 3PB
- 2 - ALPHA PHARMACY - N22 8ED
- 3 - AMY PHARMACY - N8 8SY
- 4 - AVENUE PHARMACY - N8 0DU
- 5 - BAILEY & SAUNDERS HIGHGATE PHARMACY - N6 5HX
- 6 - BEAUTYCHEM PHARMACY - N17 7LH
- 7 - BOOTS - N10 1DJ
- 8 - BOOTS - N15 4QD
- 9 - BOOTS - N22 6BA
- 10 - BOOTS - N8 8DU
- 11 - BROADWAY PHARMACY - N10 3RS
- 12 - CLOCKWORK PHARMACY - N11 2DN
- 13 - COOPERS PHARMACY - N15 4DJ
- 14 - CORAL PHARMACY - N8 8LA
- 15 - CROSS CHEMIST - N22 5DU
- 16 - DOBBER PHARMACY - N15 5NR
- 17 - DOWSETT PHARMACY - N17 9DD
- 18 - DP MARK CHEMIST - N4 1JX
- 19 - DUKES PHARMACY - N10 1DJ
- 20 - FROST & Co - N8 7PS
- 21 - GF PORTER DISPENSING CHEMIST - N17 7BU
- 22 - GRACE PHARMACY - N17 0HJ
- 23 - GREENWOODS PHARMACY - N22 6DS
- 24 - HAYWARD PHARMACY - N6 4EJ
- 25 - HORNSEY CENTRAL PHARMACY - N8 8JD
- 26 - J LORD CHEMIST - N22 5DJ
- 27 - LLOYDS PHARMACY - N17 9JD
- 28 - LLOYDS PHARMACY - N22 8HH
- 29 - LLOYDS PHARMACY - N22 8JW
- 30 - MANSONS PHARMACY - N15 6JR
- 31 - MED-CHEM PHARMACY - N4 1DU
- 32 - MINTONS CHEMIST - N22 6BH
- 33 - MORRISONS PHARMACY - N22 6BH
- 34 - MUSWELL HILL PHARMACY - N10 3HN
- 35 - PARADE CHEMIST - N4 1LG
- 36 - PARK ROAD PHARMACY - N8 8JR
- 37 - PETERS PHARMACY - N8 8DT
- 38 - PHARMACIA NATURALE - N8 9TN
- 39 - PHARMACY EXPRESS - N22 8HH
- 40 - PHARMACY WAREHOUSE 2U - N17 9EJ
- 41 - PHARMOCARE - N17 6QB
- 42 - PHARMOCARE - N17 6SB
- 43 - PHARMOCARE - N17 8AH
- 44 - PHARMOCARE - N17 8EY
- 45 - PHARMOCARE - N17 8HH

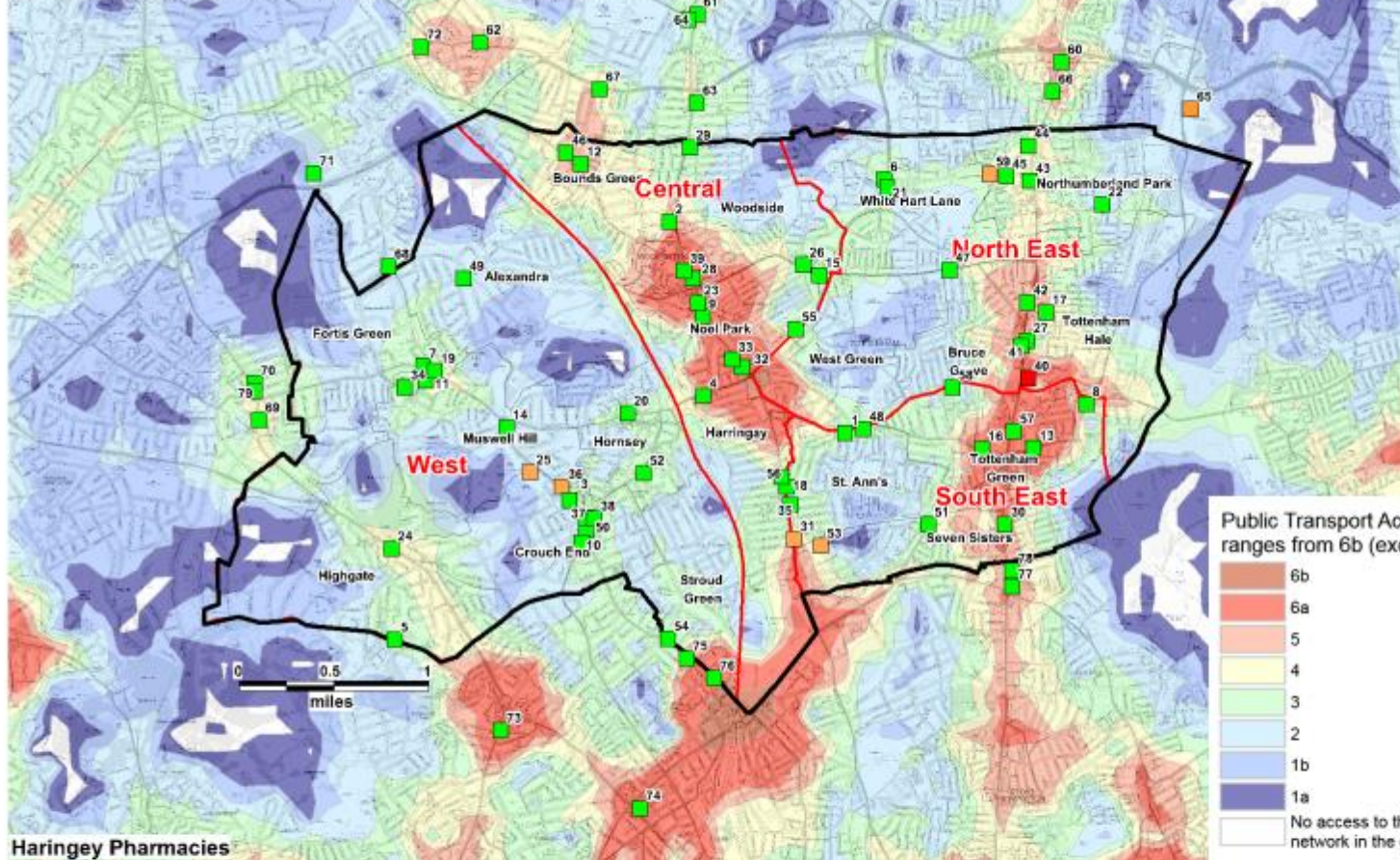
Non Pharmacy Providers

- Barnet, Enfield and Haringey Mental Health Trust
- Grove Drug Treatment Service
- The Laurels Healthy Living Centre / Bamdoc
- Whittington Health
- Young people's drug and alcohol treatment service

Out of Borough Non Pharmacy Providers

- North Middlesex University Hospital NHS Trust
- The Whittington Hospital NHS Trust
- Barnoc

**Pharmaceutical Needs Assessment
Map of Provision and Public Transport Accessibility Level (PTAL) 2012**



Out of Borough Pharmacies

- 60 - BEES CHEMIST - N18 2JB
- 61 - BOOTS THE CHEMIST - N13 4YB
- 62 - COOPER CHEMISTS - N11 1AH
- 63 - GREENS PHARMACY - N13 6JU
- 64 - MORRISONS PHARMACY - N13 4YD
- 65 - TESCO PHARMACY - N18 3HF
- 66 - WISE PHARMACY - N18 2TW
- 67 - N. R. PATEL CHEMISTS - N13 4SE
- 68 - ABBOTT PHARMACY - N10 1LR
- 69 - C W ANDREW - N2 9PJ
- 70 - COOTES PHARMACY - N2 9ED
- 71 - TESCO PHARMACY - N12 0SH
- 72 - VANTAGE PHARMACY - N11 1NE
- 73 - ARKLE PHARMACY - N19 5QU
- 74 - BOOTS THE CHEMIST - N7 8QA
- 75 - NUCHEM - N4 3PX
- 76 - ROGER DAVIES - N4 3EF
- 77 - BOOTS THE CHEMIST - N16 6TT
- 78 - LANDS CHEMISTS - N16 6TY
- 79 - OAKDALE PHARMACY - N2 8AQ

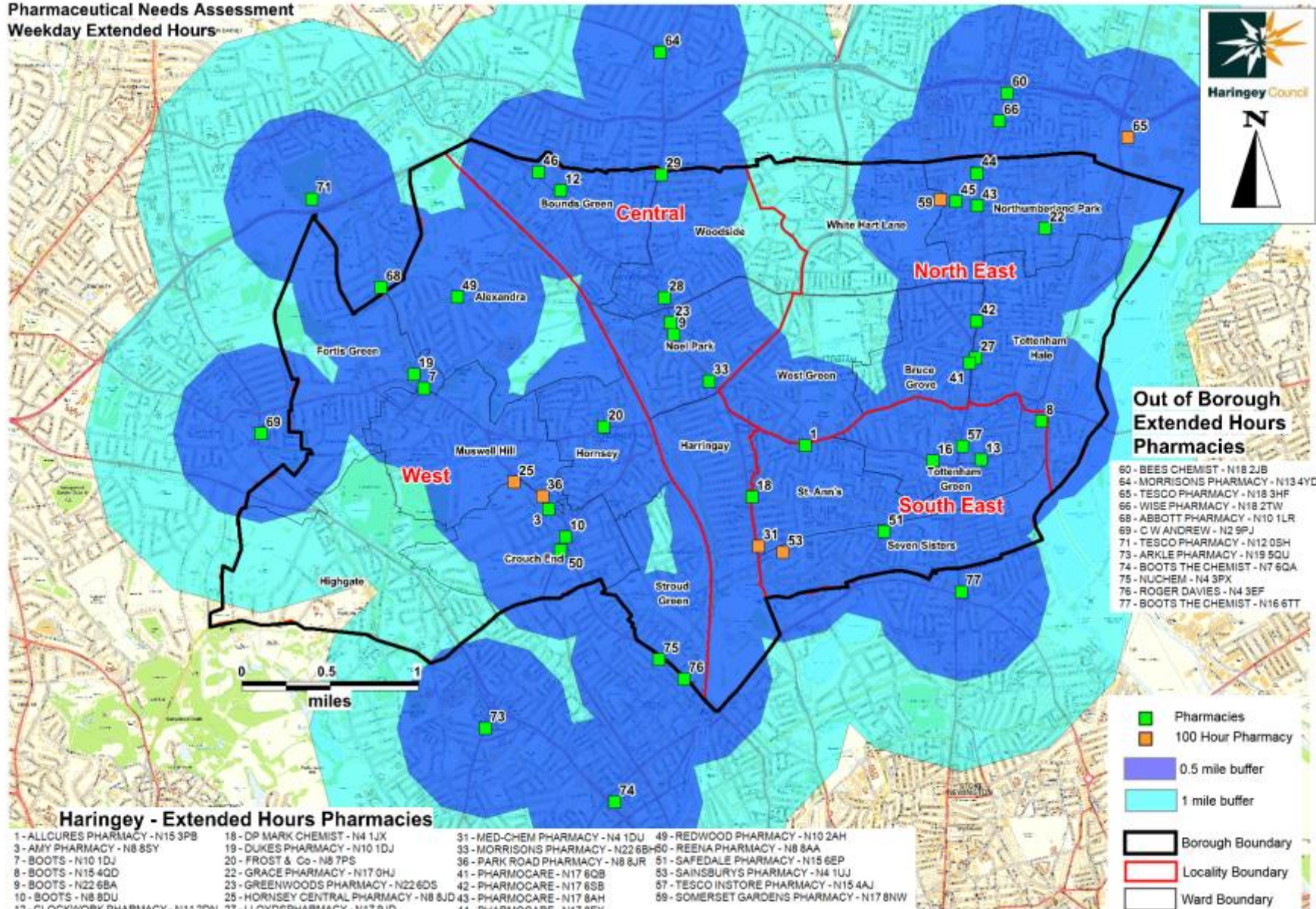
Public Transport Accessibility Level (PTAL) ranges from 6b (excellent) to 1a (Very Poor)

- 6b
- 6a
- 5
- 4
- 3
- 2
- 1b
- 1a
- No access to the public transport network in the given parameters
- 100 Hour Pharmacy
- Distance Selling
- Pharmacies
- Borough Boundary
- Locality Boundary
- Ward Boundary

Haringey Pharmacies

- | | | | |
|--|---|--------------------------------------|--|
| 1 - ALLCURES PHARMACY - N15 3PB | 16 - DOBBER PHARMACY - N15 5NR | 31 - MED-CHEM PHARMACY - N4 1DU | 46 - PHARMOCARE (WARWICK PHARMACY) - N11 2EU - N11 2EU |
| 2 - ALPHA PHARMACY - N22 8ED | 17 - DOWSETT PHARMACY - N17 9DD | 32 - MINTONS CHEMIST - N22 8BH | 47 - PHILLIPS CHEMIST - N17 6XF |
| 3 - AMY PHARMACY - N8 8SY | 18 - DP MARK CHEMIST - N4 1JX | 33 - MORRISONS PHARMACY - N22 6BH | 48 - RAM PHARMACY - N15 3BL |
| 4 - AVENUE PHARMACY - N8 0DU | 19 - DUKES PHARMACY - N10 1DJ | 34 - MUSWELL HILL PHARMACY - N10 3HN | 49 - REDWOOD PHARMACY - N10 2AH |
| 5 - BAILEY & SAUNDERS HIGHGATE PHARMACY - N6 5HX | 20 - FROST & Co - N8 7PS | 35 - PARADE CHEMIST - N4 1LG | 50 - REENA PHARMACY - N8 8AA |
| 6 - BEAUTYCHEM PHARMACY - N17 7LH | 21 - GP PORTER DISPENSING CHEMIST - N17 7BU | 36 - PARK ROAD PHARMACY - N8 8JR | 51 - SAFEDALE PHARMACY - N15 6EP |
| 7 - BOOTS - N10 1DU | 22 - GRACE PHARMACY - N17 0HJ | 37 - PETTERS PHARMACY - N8 8DT | 52 - SAIGRACE PHARMACY - N8 9BG |
| 8 - BOOTS - N15 4QD | 23 - GREENWOODS PHARMACY - N22 6DS | 38 - PHARMACIA NATURALE - N8 9TN | 53 - SAINSBURYS PHARMACY - N4 1UJ |
| 9 - BOOTS - N22 6BA | 24 - HAYWARD PHARMACY - N6 4EJ | 39 - PHARMACY EXPRESS - N22 8HH | 54 - SANTAS PHARMACY - N4 3RN |
| 10 - BOOTS - N8 8DU | 25 - HORNSEY CENTRAL PHARMACY - N8 8JD | 40 - PHARMACY WAREHOUSE2U - N17 9EJ | 55 - SAVEMORE PHARMACY - N22 6SA |
| 11 - BROADWAY PHARMACY - N10 3RS | 26 - J LORD CHEMIST - N22 8DU | 41 - PHARMOCARE - N17 6QB | 56 - STEARNS PHARMACY - N8 0RL |
| 12 - CLOCKWORK PHARMACY - N11 2DN | 27 - LLOYDSPHARMACY - N17 8JD | 42 - PHARMOCARE - N17 6SB | 57 - TESCO INSTORE PHARMACY - N15 4AJ |
| 13 - COOPERS PHARMACY - N15 4DJ | 28 - LLOYDSPHARMACY - N22 8HH | 43 - PHARMOCARE - N17 8AH | 58 - THE CADGE PHARMACY - N15 4JR |
| 14 - CORAL PHARMACY - N8 8LA | 29 - LLOYDSPHARMACY - N22 8JW | 44 - PHARMOCARE - N17 8EY | 58 - SOMERSET GARDENS PHARMACY - N17 8NW |
| 15 - CROSS CHEMIST - N22 8DU | 30 - MANSONS PHARMACY - N15 6JR | 45 - PHARMOCARE - N17 8HH | |

**Pharmaceutical Needs Assessment
Weekday Extended Hours**



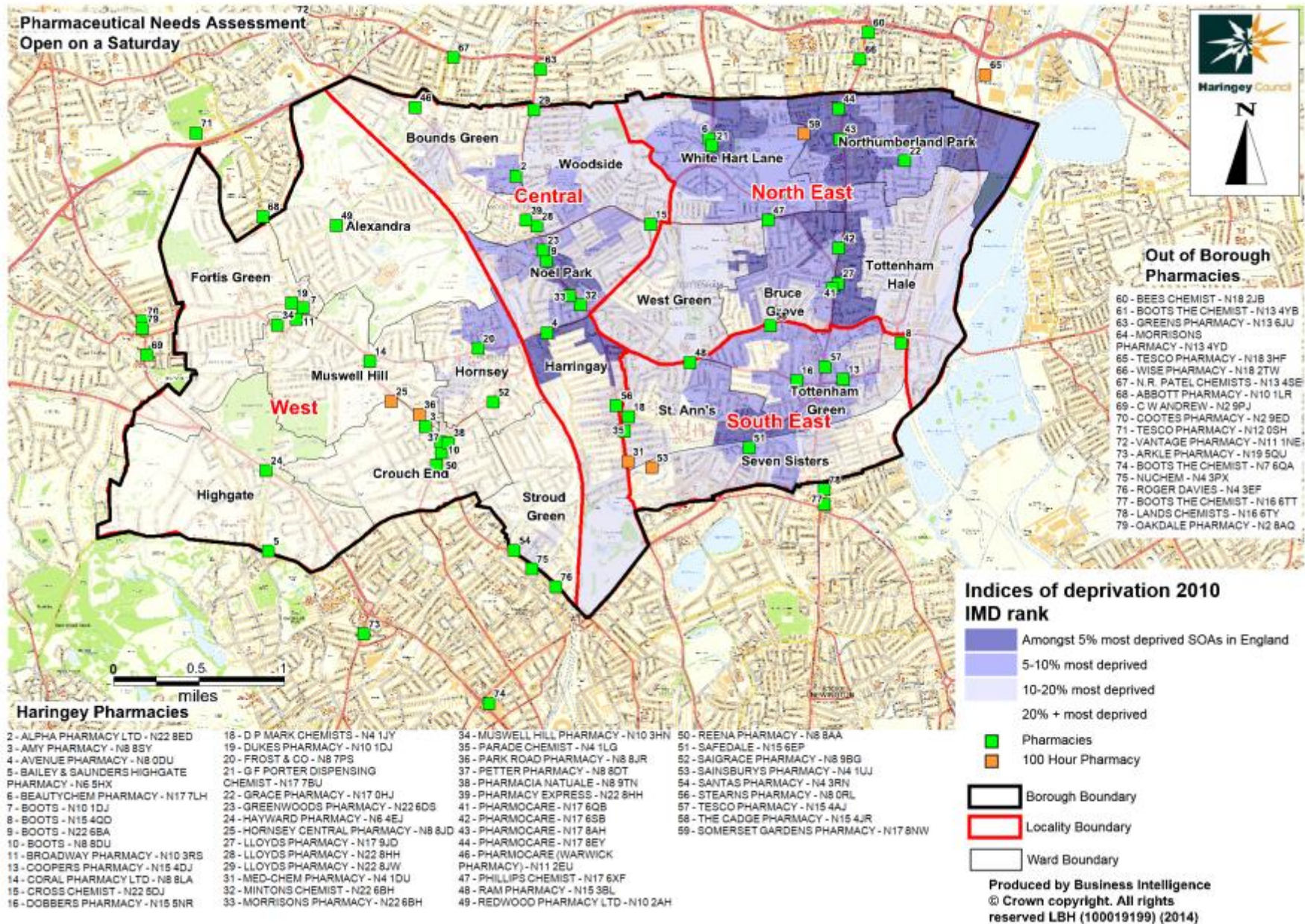
**Out of Borough
Extended Hours
Pharmacies**

- 60 - BEES CHEMIST - N18 2JB
- 64 - MORRISONS PHARMACY - N13 4YD
- 65 - TESCO PHARMACY - N18 3HF
- 66 - WISE PHARMACY - N18 2TW
- 68 - ABBOTT PHARMACY - N10 1LR
- 69 - C W ANDREW - N2 9PJ
- 71 - TESCO PHARMACY - N12 0SH
- 73 - ARKLE PHARMACY - N19 5QU
- 74 - BOOTS THE CHEMIST - N7 6QA
- 75 - NUCHEM - N4 3PX
- 76 - ROGER DAVIES - N4 3EF
- 77 - BOOTS THE CHEMIST - N16 6TT

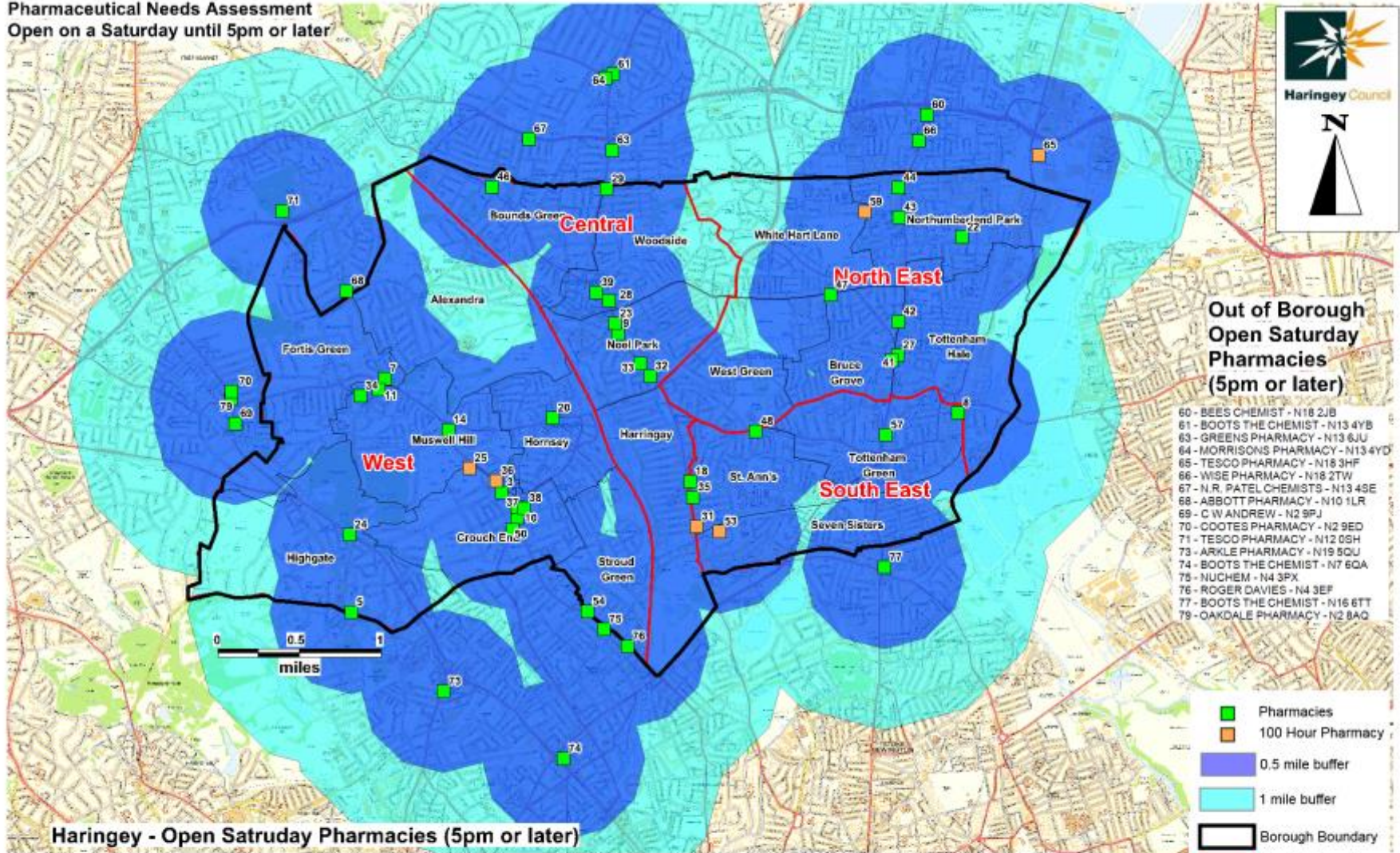
- Pharmacies
- 100 Hour Pharmacy
- 0.5 mile buffer
- 1 mile buffer
- Borough Boundary
- Locality Boundary
- Ward Boundary

Haringey - Extended Hours Pharmacies

- | | | | |
|-----------------------------------|--|--|--|
| 1 - ALLCURES PHARMACY - N15 3PB | 18 - DP MARK CHEMIST - N4 1JX | 31 - MED-CHEM PHARMACY - N4 1DU | 49 - REDWOOD PHARMACY - N10 2AH |
| 3 - AMY PHARMACY - N8 85Y | 19 - DUKES PHARMACY - N10 1DJ | 33 - MORRISONS PHARMACY - N22 6BH | 50 - REENA PHARMACY - N8 8AA |
| 7 - BOOTS - N10 1DJ | 20 - FROST & Co - N8 7PS | 36 - PARK ROAD PHARMACY - N8 6JR | 51 - SAFEDALE PHARMACY - N15 6EP |
| 8 - BOOTS - N15 4QD | 22 - GRACE PHARMACY - N17 0HJ | 41 - PHARMOCARE - N17 6CB | 53 - SAINSBURY'S PHARMACY - N4 1UJ |
| 9 - BOOTS - N22 6BA | 23 - GREENWOODS PHARMACY - N22 6DS | 42 - PHARMOCARE - N17 6SB | 57 - TESCO INSTORE PHARMACY - N15 4AJ |
| 10 - BOOTS - N8 8DU | 25 - HORNSEY CENTRAL PHARMACY - N8 6JD | 43 - PHARMOCARE - N17 8AY | 59 - SOMERSET GARDENS PHARMACY - N17 8NW |
| 12 - CLOCKWORK PHARMACY - N11 2DN | 27 - LLOYDS PHARMACY - N17 9JD | 44 - PHARMOCARE - N17 8EY | |
| 13 - COOPERS PHARMACY - N15 4DJ | 28 - LLOYDS PHARMACY - N22 8HH | 45 - PHARMOCARE - N17 8HH | |
| 16 - DOBBER PHARMACY - N15 5NR | 29 - LLOYDS PHARMACY - N22 8JW | 46 - PHARMOCARE (WARWICK PHARMACY) - N11 2EU | |



Pharmaceutical Needs Assessment
Open on a Saturday until 5pm or later



**Out of Borough
 Open Saturday
 Pharmacies
 (5pm or later)**

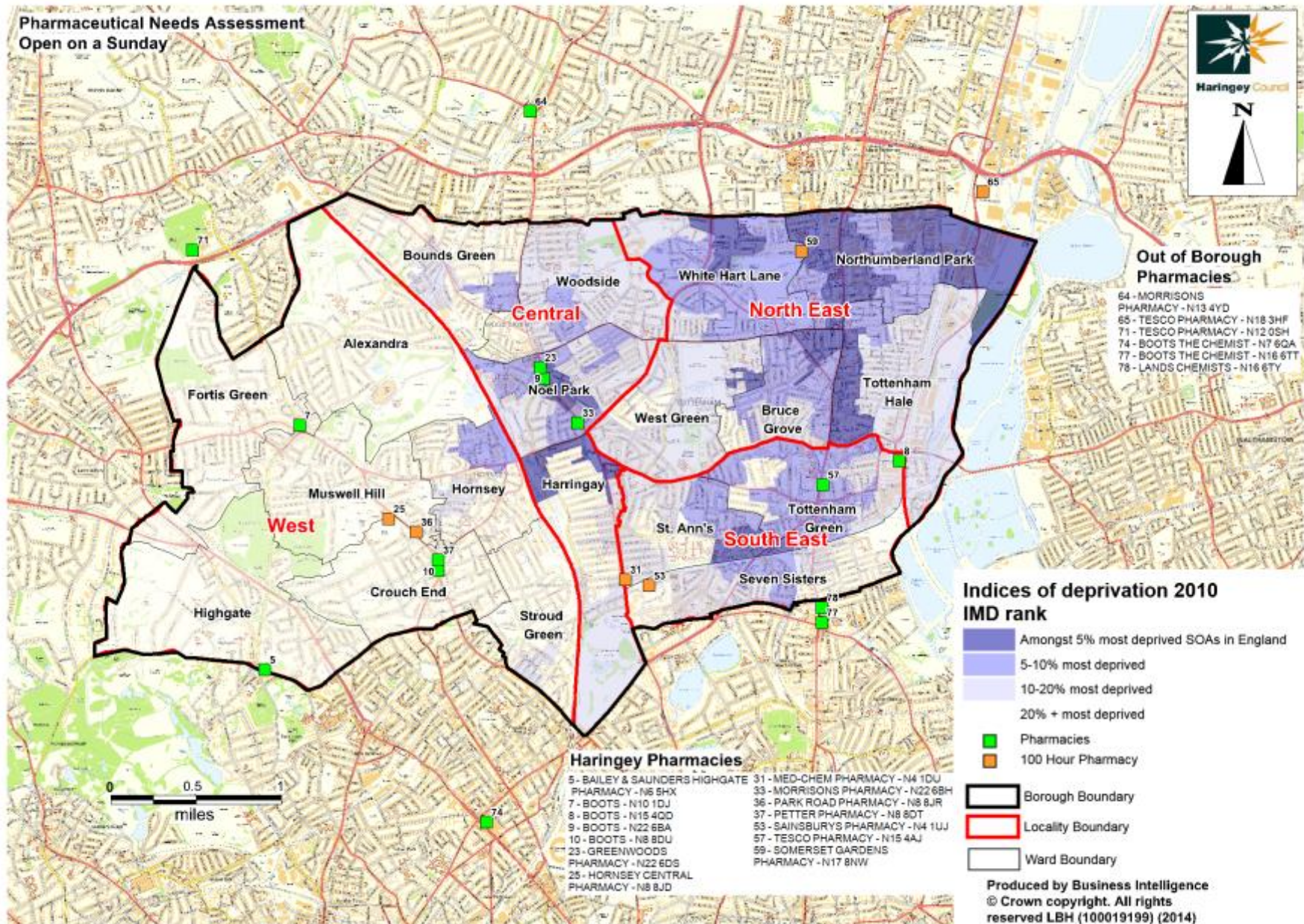
- 60 - BEES CHEMIST - N18 2JB
- 61 - BOOTS THE CHEMIST - N13 4YB
- 63 - GREENS PHARMACY - N13 6JU
- 64 - MORRISONS PHARMACY - N13 4YD
- 65 - TESCO PHARMACY - N18 3HF
- 66 - WISE PHARMACY - N18 2TW
- 67 - N.R. PATEL CHEMISTS - N13 4SE
- 68 - ABBOTT PHARMACY - N10 1LR
- 69 - C W ANDREW - N2 9PJ
- 70 - COOTES PHARMACY - N2 9ED
- 71 - TESCO PHARMACY - N12 0SH
- 73 - ARKLE PHARMACY - N19 9QU
- 74 - BOOTS THE CHEMIST - N7 6QA
- 75 - NUCHEM - N4 3PX
- 76 - ROGER DAVIES - N4 3EF
- 77 - BOOTS THE CHEMIST - N16 6TT
- 79 - OAKDALE PHARMACY - N2 8AQ

Haringey - Open Saturday Pharmacies (5pm or later)

- | | | | |
|--|--|--------------------------------------|--|
| 3 - AMY PHARMACY - N8 8SY | 22 - GRACE PHARMACY - N17 0HJ | 34 - MUSWELL HILL PHARMACY - N10 3HN | 46 - PHARMOCARE (WARWICK PHARMACY) - N11 2EU |
| 5 - BAILEY & SAUNDERS HIGHGATE PHARMACY - N6 5HX | 23 - GREENWOODS PHARMACY - N22 6DS | 35 - PARADE CHEMIST - N4 1LG | 47 - PHILLIPS CHEMIST - N17 6XF |
| 7 - BOOTS - N10 1DJ | 24 - HAYWARD PHARMACY - N6 4EJ | 36 - PARK ROAD PHARMACY - N8 8JR | 48 - RAM PHARMACY - N15 3BL |
| 8 - BOOTS - N15 4QD | 25 - HORNSEY CENTRAL PHARMACY - N8 8JD57 | 37 - PETTERS PHARMACY - N8 8DT | 50 - REENA PHARMACY - N8 8AA |
| 9 - BOOTS - N22 6BA | 27 - LLOYDS PHARMACY - N17 8JD | 38 - PHARMACIA NATURALE - N8 9TN | 53 - SAINSBURYS PHARMACY - N4 1UJ |
| 10 - BOOTS - N8 8DU | 28 - LLOYDS PHARMACY - N22 8HH | 39 - PHARMACY EXPRESS - N22 8HH | 54 - SANTAS PHARMACY - N4 3RN |
| 11 - BROADWAY PHARMACY - N10 3RS | 29 - LLOYDS PHARMACY - N22 8JW | 41 - PHARMOCARE - N17 6QB | 57 - TESCO INSTORE PHARMACY - N15 4AJ |
| 14 - CORAL PHARMACY - N8 8LA | 31 - MED-CHEM PHARMACY - N4 1DU | 42 - PHARMOCARE - N17 6SB | 59 - SOMERSET GARDENS PHARMACY - N17 8NW |
| 18 - DP MARK CHEMIST - N4 1JX | 32 - MINTONS CHEMIST - N22 6BH | 43 - PHARMOCARE - N17 8AH | |
| 20 - FROST & Co - N8 7PS | 33 - MORRISONS PHARMACY - N22 6BH | 44 - PHARMOCARE - N17 8EY | |

- Pharmacies
- 100 Hour Pharmacy
- 0.5 mile buffer
- 1 mile buffer
- Borough Boundary
- Locality Boundary
- Ward Boundary

Pharmaceutical Needs Assessment
Open on a Sunday



- Out of Borough Pharmacies**
- 64 - MORRISONS PHARMACY - N13 4YD
 - 65 - TESCO PHARMACY - N18 3HF
 - 71 - TESCO PHARMACY - N12 0SH
 - 74 - BOOTS THE CHEMIST - N7 6QA
 - 77 - BOOTS THE CHEMIST - N16 6TT
 - 78 - LANDS CHEMISTS - N16 6TY

- Indices of deprivation 2010**
IMD rank
- Amongst 5% most deprived SOAs in England
 - 5-10% most deprived
 - 10-20% most deprived
 - 20% + most deprived

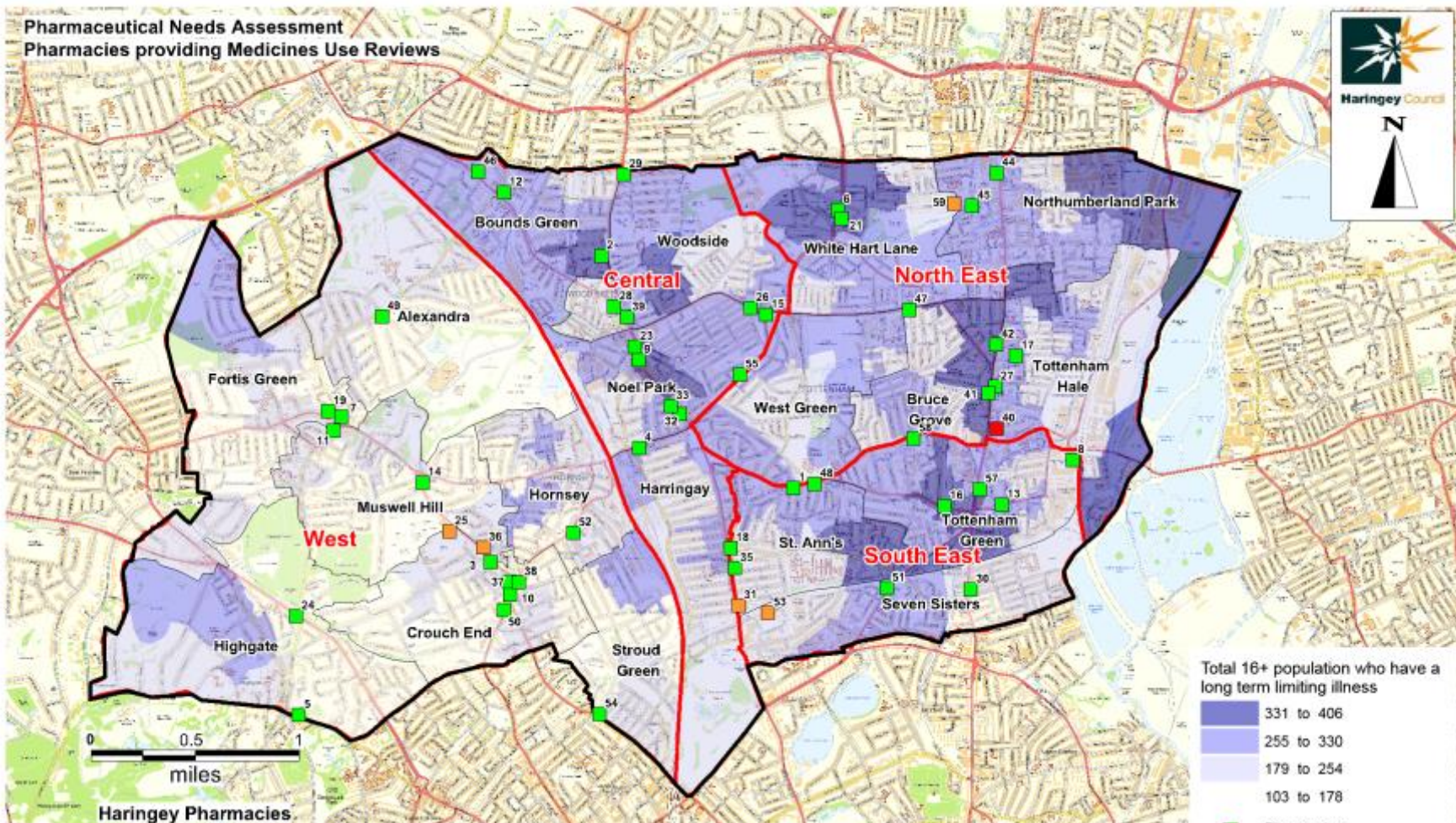
- Pharmacies
- 100 Hour Pharmacy

- Borough Boundary
- Locality Boundary
- Ward Boundary

- Haringey Pharmacies**
- 5 - BAILEY & SAUNDERS HIGHGATE PHARMACY - N6 5HX
 - 7 - BOOTS - N10 1DU
 - 8 - BOOTS - N15 4QD
 - 9 - BOOTS - N22 6BA
 - 10 - BOOTS - N8 8DU
 - 23 - GREENWOODS PHARMACY - N22 6DS
 - 25 - HORNSEY CENTRAL PHARMACY - N8 8JD
 - 31 - MED-CHEM PHARMACY - N4 1DU
 - 33 - MORRISONS PHARMACY - N22 6BH
 - 36 - PARK ROAD PHARMACY - N8 8JR
 - 37 - PETTER PHARMACY - N8 8DT
 - 53 - SAINSBURY'S PHARMACY - N4 1UJ
 - 57 - TESCO PHARMACY - N15 4AJ
 - 59 - SOMERSET GARDENS PHARMACY - N17 8NW



**Pharmaceutical Needs Assessment
Pharmacies providing Medicines Use Reviews**



Total 16+ population who have a long term limiting illness

- 331 to 406
- 255 to 330
- 179 to 254
- 103 to 178

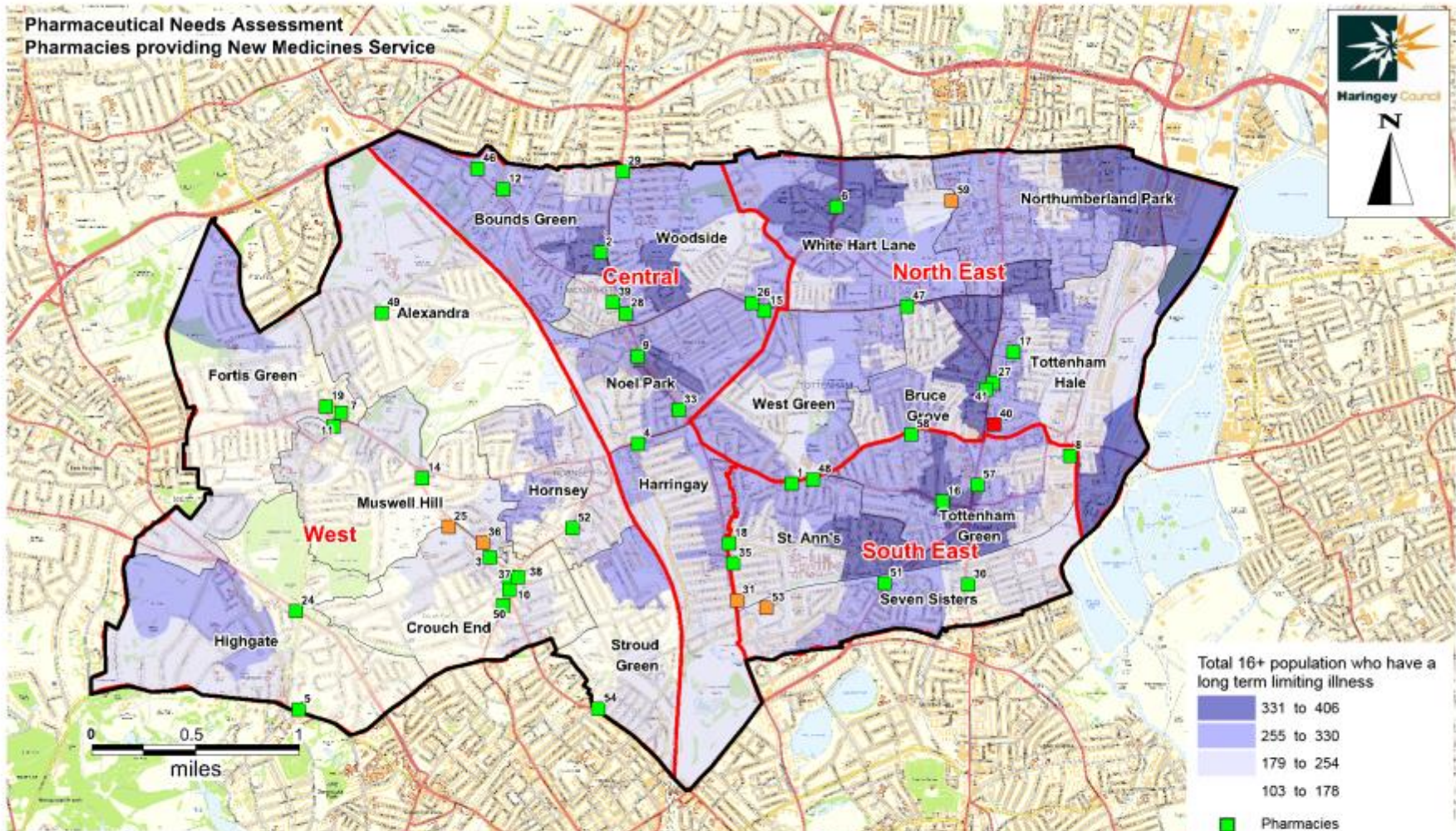
- Pharmacies
- 100 Hour Pharmacy
- Distance Selling
- Borough Boundary
- Locality Boundary
- Ward Boundary



Haringey Pharmacies

- | | | | |
|--|---|--------------------------------------|--|
| 1 - ALLCURES PHARMACY - N15 3PB | 14 - CORAL PHARMACY - N8 8LA | 29 - LLOYDS PHARMACY - N22 8JW | 45 - PHARMOCARE - N17 8HH |
| 2 - ALPHA PHARMACY - N22 8ED | 15 - CROSS CHEMIST - N22 5DJ | 30 - MANSON'S PHARMACY - N15 6JR | 46 - PHARMOCARE (WARWICK PHARMACY) - N11 2EU |
| 3 - AMY PHARMACY - N8 8SY | 16 - DOBBER PHARMACY - N15 8NR | 31 - MED-CHEM PHARMACY - N4 1DU | 47 - PHILLIPS CHEMIST - N17 6XF |
| 4 - AVENUE PHARMACY - N8 0DU | 17 - DOWSETT PHARMACY - N17 5DD | 32 - MINTONS CHEMIST - N22 6BH | 48 - RAM PHARMACY - N15 3BL |
| 5 - BAILEY & SAUNDERS HIGHGATE PHARMACY - N6 5HX | 18 - D P MARK CHEMIST - N4 1JX | 33 - MORRISONS PHARMACY - N22 6BH | 49 - REDWOOD PHARMACY - N10 2AH |
| 6 - BEAUTYCHEM PHARMACY - N17 7LH | 19 - DUKES PHARMACY - N10 1DJ | 35 - PARADE CHEMIST - N4 1LG | 50 - REENA PHARMACY - N8 8AA |
| 7 - BOOTS - N10 1DJ | 21 - GF PORTER DISPENSING CHEMIST - N17 7BU | 36 - PARK ROAD PHARMACY - N8 8JR | 51 - SAFEDALE PHARMACY - N15 6EP |
| 8 - BOOTS - N15 4OD | 23 - GREENWOODS PHARMACY - N22 6DS | 37 - PETERS PHARMACY - N8 8DT | 52 - SAIGRACE PHARMACY - N8 9BG |
| 9 - BOOTS - N22 6BA | 24 - HAYWARD PHARMACY - N6 4EJ | 38 - PHARMACIA NATURALE - N8 9TN | 53 - SAINSBURY'S PHARMACY - N4 1UJ |
| 10 - BOOTS - N8 8DU | 25 - HORNSEY CENTRAL PHARMACY - N8 8JD | 39 - PHARMACY EXPRESS - N22 8HH | 54 - SANTAS PHARMACY - N4 3RN |
| 11 - BROADWAY PHARMACY - N10 3RS | 26 - J LORD CHEMIST - N22 5DJ | 40 - PHARMACY WAREHOUSE 2U - N17 9EJ | 55 - SAVEMORE PHARMACY - N22 6SA |
| 12 - CLOCKWORK PHARMACY - N11 2DN | 27 - LLOYDS PHARMACY - N17 5JD | 41 - PHARMOCARE - N17 6QB | 57 - TESCO INSTORE PHARMACY - N15 4AJ |
| 13 - COOPERS PHARMACY - N15 4DJ | 28 - LLOYDS PHARMACY - N22 8HH | 42 - PHARMOCARE - N17 6SS | 58 - THE GADGE PHARMACY - N15 4JR |
| | | 44 - PHARMOCARE - N17 8EY | 59 - SOMERSET GARDENS PHARMACY - N17 8NW |

**Pharmaceutical Needs Assessment
Pharmacies providing New Medicines Service**



Haringey Pharmacies

- | | | | | |
|--|--|-----------------------------------|--|--|
| 1 - ALLCURES PHARMACY - N15 3PB | 11 - BROADWAY PHARMACY - N10 3RS | 27 - LLOYDSPHARMACY - N17 9JD | 40 - PHARMACYWAREHOUSE2U - N17 9EJ | 57 - TESCO INSTORE PHARMACY - N15 4AJ |
| 2 - ALPHA PHARMACY - N22 8ED | 12 - CLOCKWORK PHARMACY - N11 2DN | 28 - LLOYDSPHARMACY - N22 8HH | 41 - PHARMOCARE - N17 6QB | 58 - THE CADGE PHARMACY - N15 4JR |
| 3 - AMY PHARMACY - N8 8SY | 14 - CORAL PHARMACY - N8 8LA | 29 - LLOYDSPHARMACY - N22 8JW | 46 - PHARMOCARE (WARWICK PHARMACY) - N11 2EU | 59 - SOMERSET GARDENS PHARMACY - N17 8NW |
| 4 - AVENUE PHARMACY - N8 0DU | 15 - CROSS CHEMIST - N22 5DJ | 30 - MANSON'S PHARMACY - N15 6JR | 47 - PHILLIPS CHEMIST - N17 6XF | |
| 5 - BAILEY & SAUNDERS HIGHGATE PHARMACY - N6 5HX | 16 - DOBBER PHARMACY - N15 5NR | 31 - MED-CHEM PHARMACY - N4 1DU | 48 - RAM PHARMACY - N15 3BL | |
| 6 - BEAUTYCHEM PHARMACY - N17 7LH | 17 - DOWSETT PHARMACY - N10 1DJ | 33 - MCDRISONS PHARMACY - N22 6BH | 49 - REDWOOD PHARMACY - N10 2AH | |
| 7 - BOOTS - N10 1DJ | 18 - D P MARK CHEMIST - N4 1JX | 35 - PARADE CHEMIST - N4 1LG | 50 - REENA PHARMACY - N8 8AA | |
| 8 - BOOTS - N15 4QD | 19 - DUKES PHARMACY - N10 1DJ | 36 - PARK ROAD PHARMACY - N8 8JR | 51 - SAFEDALE PHARMACY - N15 6EP | |
| 9 - BOOTS - N22 6BA | 24 - HAYWARD PHARMACY - N6 4EJ | 37 - PETERS PHARMACY - N8 8DT | 52 - SAIGRACE PHARMACY - N8 9BG | |
| 10 - BOOTS - N8 8DU | 25 - HORNSEY CENTRAL PHARMACY - N8 8JD | 38 - PHARMACIA NATURALE - N8 9TN | 53 - SAINSBURYS PHARMACY - N4 1UJ | |
| | 26 - J LORD CHEMIST - N22 5DJ | 39 - PHARMACY EXPRESS - N22 8HH | 54 - SANTAS PHARMACY - N4 3RN | |

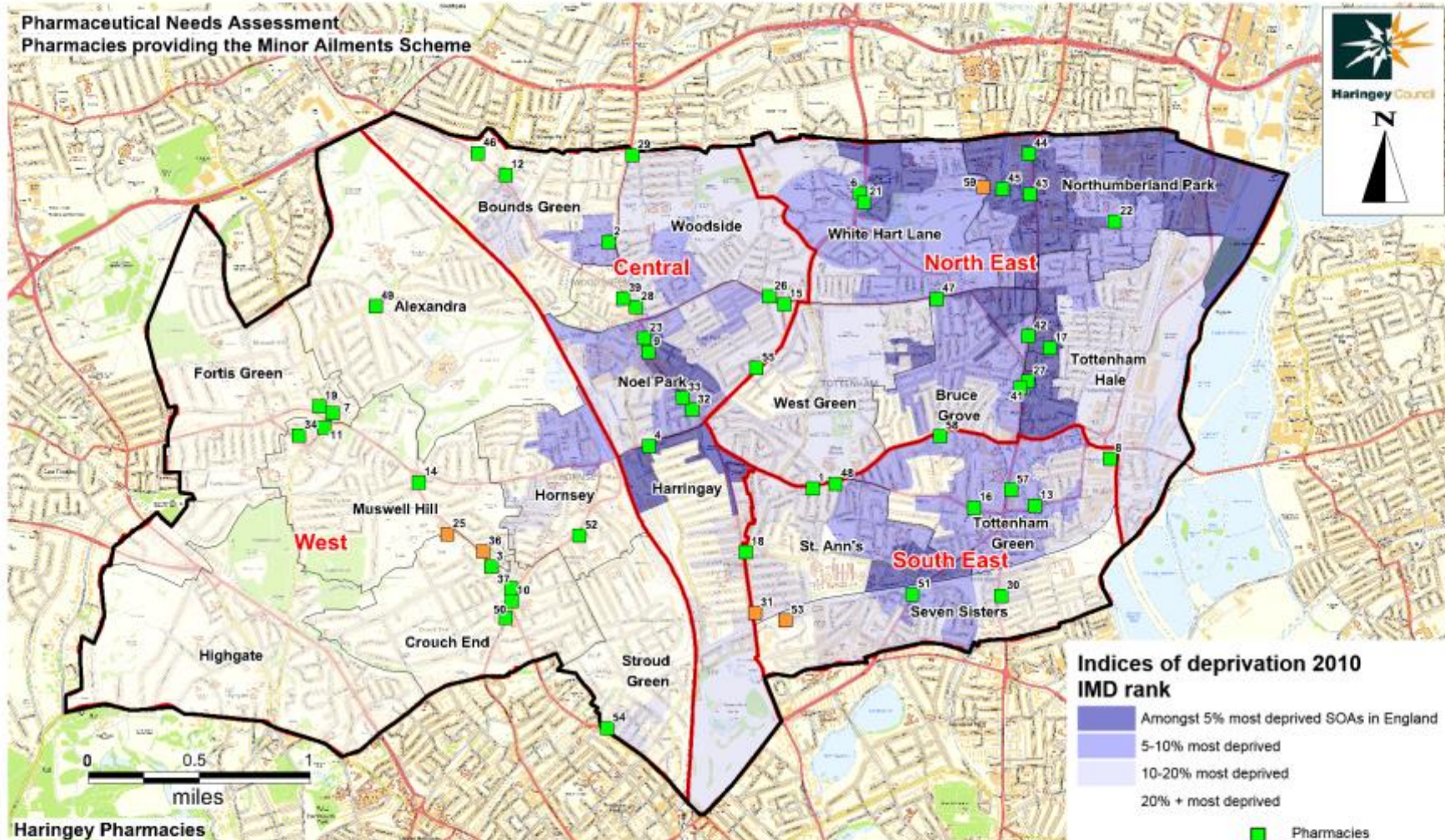
Total 16+ population who have a long term limiting illness

- 331 to 406
- 255 to 330
- 179 to 254
- 103 to 178

- Pharmacies
- 100 Hour Pharmacy
- Distance Selling

- Borough Boundary
- Locality Boundary
- Ward Boundary

Pharmaceutical Needs Assessment
Pharmacies providing the Minor Ailments Scheme



**Indices of deprivation 2010
 IMD rank**

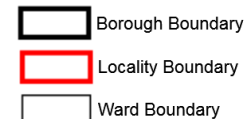
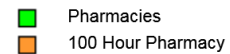
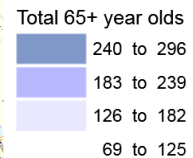
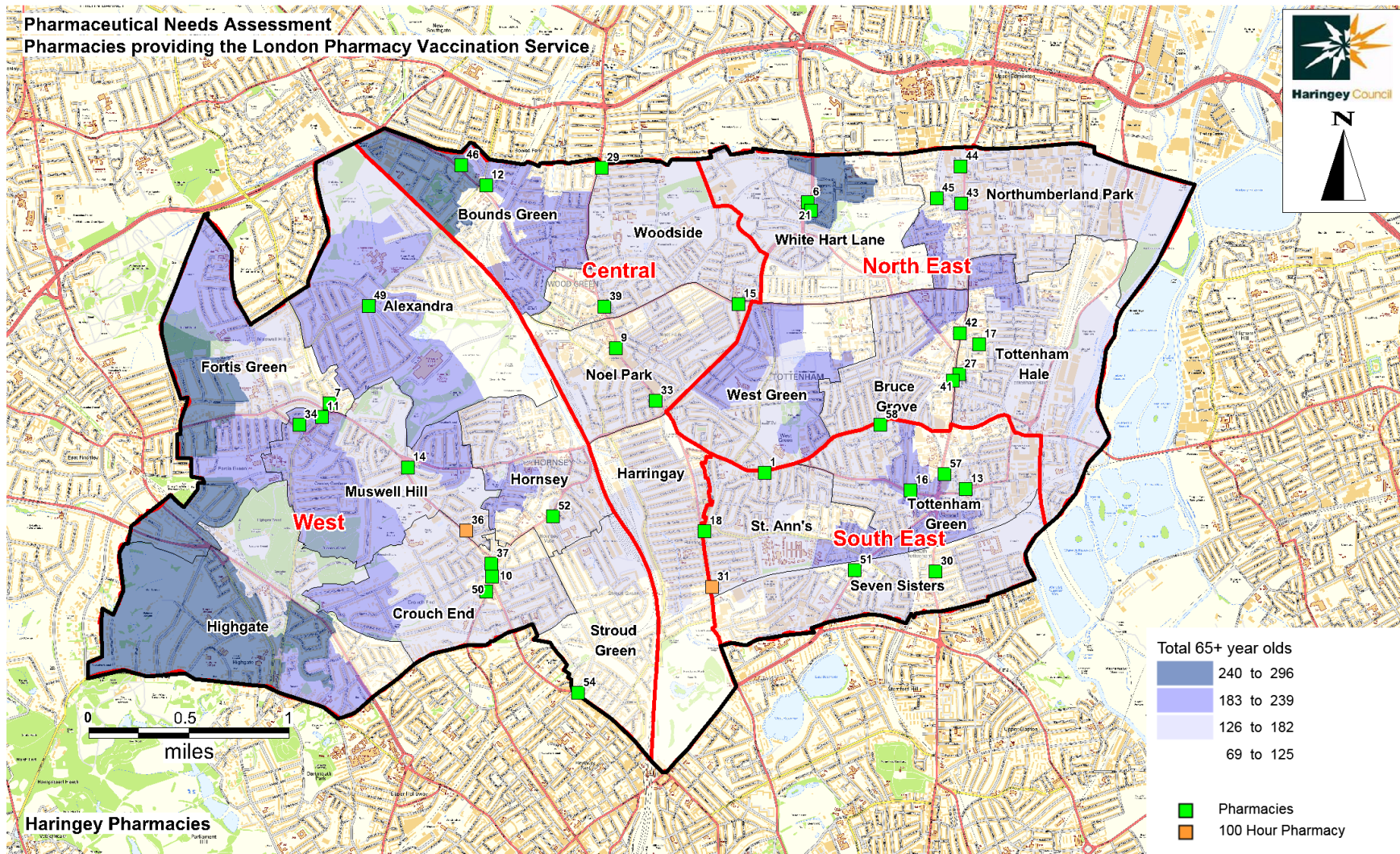
- Amongst 5% most deprived SOAs in England
- 5-10% most deprived
- 10-20% most deprived
- 20% + most deprived

Haringey Pharmacies

- | | | | | |
|-----------------------------------|---|--------------------------------------|--|--|
| 1 - ALLCURES PHARMACY - N15 3PB | 13 - COOPERS PHARMACY - N15 4DJ | 26 - J LORD CHEMIST - N22 5UJ | 39 - PHARMACY EXPRESS - N22 8HH | 51 - SAFEDALE PHARMACY - N15 6EP |
| 2 - ALPHA PHARMACY - N22 8ED | 14 - CORAL PHARMACY - N8 8LA | 27 - LLOYDSPHARMACY - N17 9JD | 41 - PHARMOCARE - N17 6QB | 52 - SAIGRACE PHARMACY - N8 9BG |
| 3 - AMY PHARMACY - N8 8SY | 15 - CROSS CHEMIST - N22 5UJ | 28 - LLOYDSPHARMACY - N22 8HH | 42 - PHARMOCARE - N17 6SB | 53 - SAINSBURYS PHARMACY - N4 1UJ |
| 4 - AVENUE PHARMACY - N8 0DU | 16 - DOBBER PHARMACY - N15 5NR | 29 - LLOYDSPHARMACY - N22 8JW | 43 - PHARMOCARE - N17 8AH | 54 - SANTAS PHARMACY - N4 3RN |
| 5 - BEAUTYCHEM PHARMACY - N17 7LH | 17 - DOWSETT PHARMACY - N17 9DD | 30 - MANSONS PHARMACY - N15 6JR | 44 - PHARMOCARE - N17 8EY | 55 - SAVEMORE PHARMACY - N22 6SA |
| 6 - BEAUTYCHEM PHARMACY - N17 7LH | 18 - D P MARK CHEMIST - N4 1JX | 31 - MED-CHEM PHARMACY - N4 1DU | 45 - PHARMOCARE - N17 8HH | 57 - TESCO INSTORE PHARMACY - N15 4AJ |
| 7 - BOOTS - N10 1DJ | 19 - DUKES PHARMACY - N10 1DJ | 32 - MINTONS CHEMIST - N22 6BH | 46 - PHARMOCARE (WARWICK PHARMACY) - N11 2EU | 58 - THE CADGE PHARMACY - N15 4JR |
| 8 - BOOTS - N15 4QD | 20 - GF PORTER DISPENSING CHEMIST - N17 7BU | 33 - MORRISONS PHARMACY - N22 6BH | 47 - PHILLIPS CHEMIST - N17 6XF | 59 - SOMERSET GARDENS PHARMACY - N17 8NW |
| 9 - BOOTS - N22 6BA | 22 - GRACE PHARMACY - N17 0HJ | 34 - MUSWELL HILL PHARMACY - N10 3HN | 48 - RAM PHARMACY - N15 3BL | |
| 10 - BOOTS - N8 8DU | 23 - GREENWOODS PHARMACY - N22 6DS | 35 - PARK ROAD PHARMACY - N8 8JR | 49 - REDWOOD PHARMACY - N10 2AH | |
| 11 - BROADWAY PHARMACY - N10 3RS | 24 - HORNSEY CENTRAL PHARMACY - N8 8JD | 36 - PETTERS PHARMACY - N8 8OT | 50 - REENA PHARMACY - N8 8AA | |
| 12 - CLOCKWORK PHARMACY - N11 2DN | | | | |

- Pharmacies
- 100 Hour Pharmacy
- Borough Boundary
- Locality Boundary
- Ward Boundary

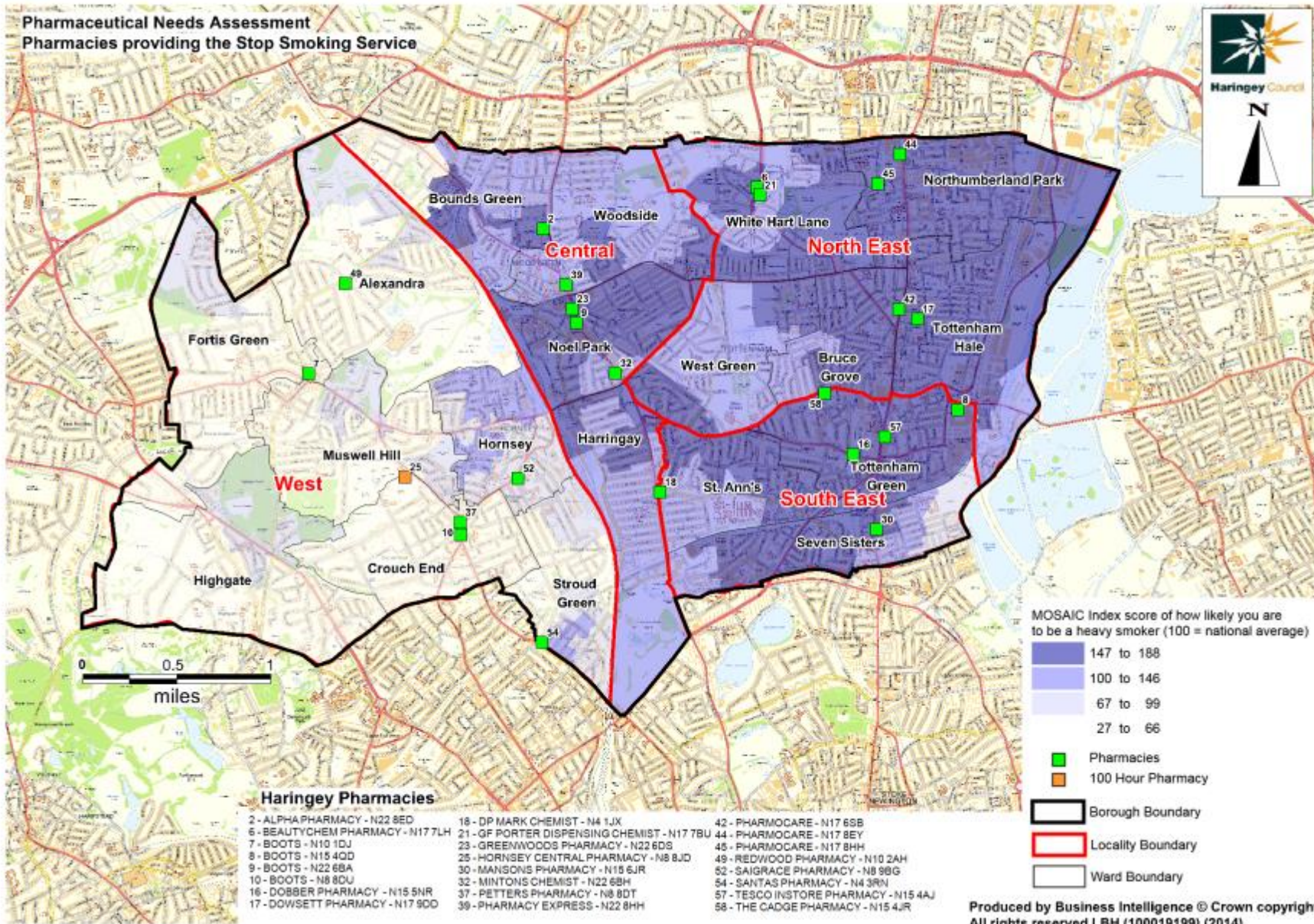
Pharmaceutical Needs Assessment
Pharmacies providing the London Pharmacy Vaccination Service



Haringey Pharmacies

- | | | | |
|-----------------------------------|---|--|---------------------------------------|
| 1 - ALLCURES PHARMACY - N15 3PB | 16 - DOBBER PHARMACY - N15 5NR | 36 - PARK ROAD PHARMACY - N8 8JR | 50 - REENA PHARMACY - N8 8AA |
| 6 - BEAUTYCHEM PHARMACY - N17 7LH | 17 - DOWSETT PHARMACY - N17 9DD | 37 - PETERS PHARMACY - N8 8DT | 51 - SAFEDALE PHARMACY - N15 6EP |
| 7 - BOOTS - N10 1DJ | 18 - D P MARK CHEMIST - N4 1JX | 39 - PHARMACY EXPRESS - N22 8HH | 52 - SAIGRACE PHARMACY - N8 9BG |
| 9 - BOOTS - N22 6BA | 21 - GF PORTER DISPENSING CHEMIST - N17 7BU41 | 41 - PHARMOCARE - N17 6QB | 54 - SANTAS PHARMACY - N4 3RN |
| 10 - BOOTS - N8 8DU | 27 - LLOYDSPHARMACY - N17 9JD | 42 - PHARMOCARE - N17 6SB | 57 - TESCO INSTORE PHARMACY - N15 4AJ |
| 11 - BROADWAY PHARMACY - N10 3RS | 29 - LLOYDSPHARMACY - N22 8JW | 43 - PHARMOCARE - N17 8AH | 58 - THE CADGE PHARMACY - N15 4JR |
| 12 - CLOCKWORK PHARMACY - N11 2DN | 30 - MANSONS PHARMACY - N15 6JR | 44 - PHARMOCARE - N17 8EY | |
| 13 - COOPERS PHARMACY - N15 4DJ | 31 - MED-CHEM PHARMACY - N4 1DU | 45 - PHARMOCARE - N17 8HH | |
| 14 - CORAL PHARMACY - N8 8LA | 33 - MORRISONS PHARMACY - N22 6BH | 46 - PHARMOCARE (WARWICK PHARMACY) - N11 2EU | |
| 15 - CROSS CHEMIST - N22 5DJ | 34 - MUSWELL HILL PHARMACY - N10 3HN | 49 - REDWOOD PHARMACY - N10 2AH | |

**Pharmaceutical Needs Assessment
Pharmacies providing the Stop Smoking Service**



Haringey Pharmacies

- | | | |
|-----------------------------------|---|---------------------------------------|
| 2 - ALPHA PHARMACY - N22 8ED | 18 - DP MARK CHEMIST - N4 1JX | 42 - PHARMOCARE - N17 6SB |
| 6 - BEAUTYCHEM PHARMACY - N17 7LH | 21 - GF PORTER DISPENSING CHEMIST - N17 7BU | 44 - PHARMOCARE - N17 8EY |
| 7 - BOOTS - N15 1DU | 23 - GREENWOODS PHARMACY - N22 6DS | 45 - PHARMOCARE - N17 8HH |
| 8 - BOOTS - N15 4QD | 25 - HORNSEY CENTRAL PHARMACY - N8 8JD | 49 - REDWOOD PHARMACY - N10 2AH |
| 9 - BOOTS - N22 6BA | 30 - MANSON'S PHARMACY - N15 6JR | 52 - SAIGRACE PHARMACY - N8 9BG |
| 10 - BOOTS - N8 8DU | 32 - MINTONS CHEMIST - N22 6BH | 54 - SANTAS PHARMACY - N4 3RN |
| 16 - DOBBER PHARMACY - N15 5NR | 37 - PETTERS PHARMACY - N8 8DT | 57 - TESCO INSTORE PHARMACY - N15 4AJ |
| 17 - DOWSETT PHARMACY - N17 9CD | 39 - PHARMACY EXPRESS - N22 8HH | 58 - THE CADGE PHARMACY - N15 4JR |

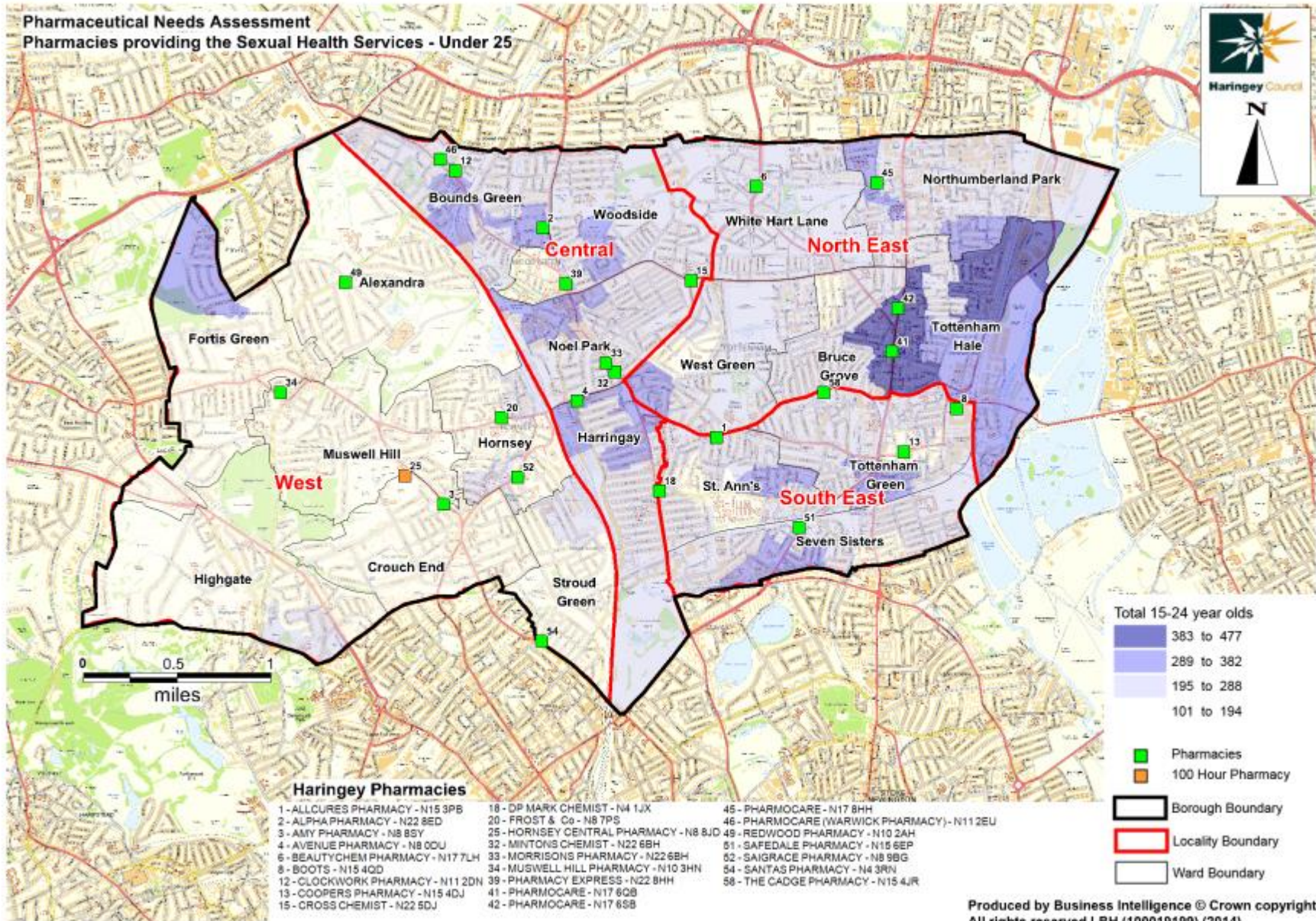
MOSAIC Index score of how likely you are to be a heavy smoker (100 = national average)

- 147 to 188
- 100 to 146
- 67 to 99
- 27 to 66

- Pharmacies
- 100 Hour Pharmacy

- Borough Boundary
- Locality Boundary
- Ward Boundary

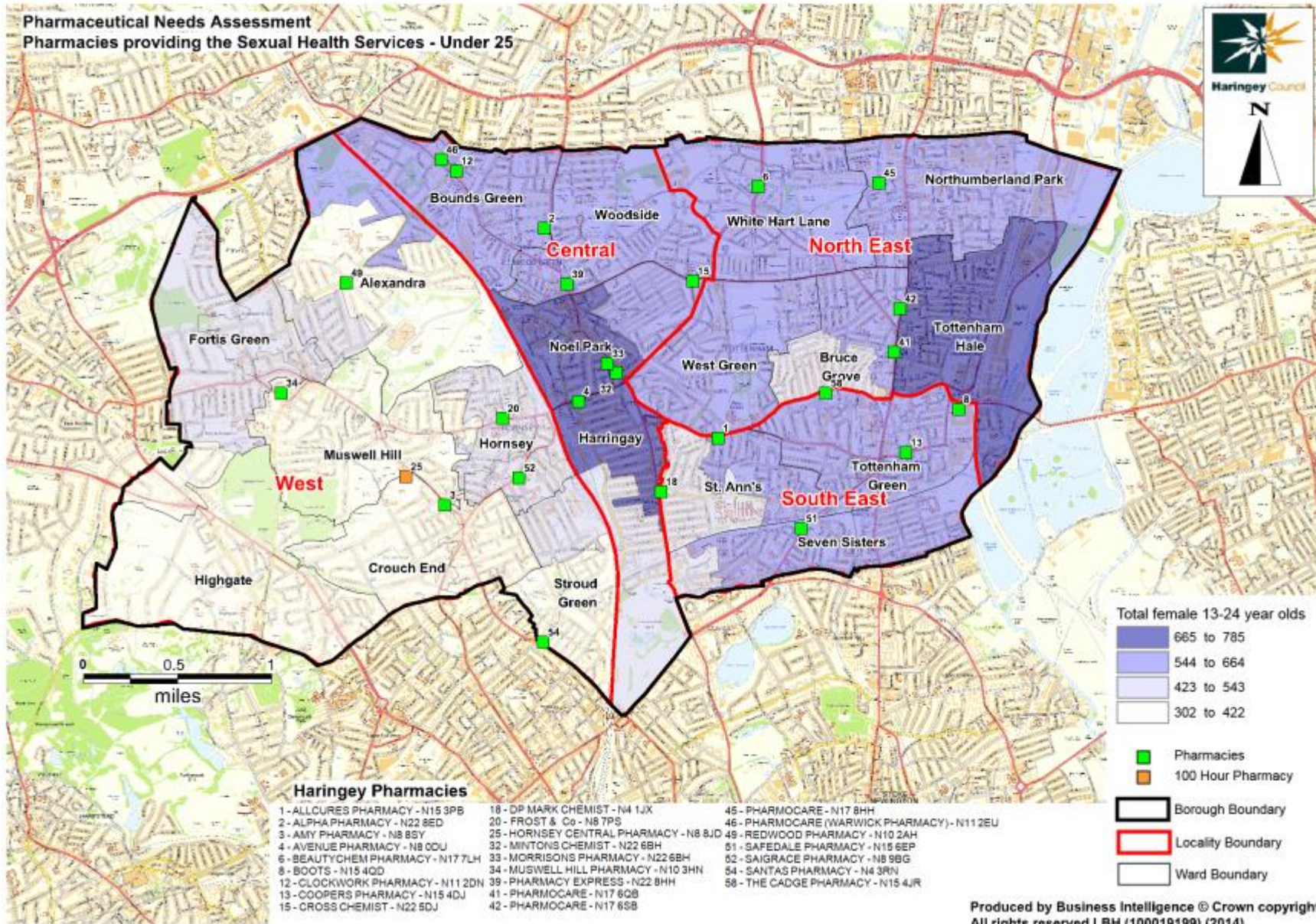
Pharmaceutical Needs Assessment
Pharmacies providing the Sexual Health Services - Under 25



Haringey Pharmacies

- | | | |
|-----------------------------------|--|--|
| 1 - ALLCURES PHARMACY - N15 3PB | 18 - DP MARK CHEMIST - N4 1JX | 45 - PHARMOCARE - N17 8HH |
| 2 - ALPHA PHARMACY - N22 8ED | 20 - FROST & Co - N8 7PS | 46 - PHARMOCARE (WARWICK PHARMACY) - N11 2EU |
| 3 - AMY PHARMACY - N8 8SY | 25 - HORNSEY CENTRAL PHARMACY - N8 8JD | 49 - REDWOOD PHARMACY - N10 2AH |
| 4 - AVENUE PHARMACY - N8 0DU | 32 - MINTONS CHEMIST - N22 6BH | 51 - SAFEDALE PHARMACY - N15 6EP |
| 6 - BEAUTYCHEM PHARMACY - N17 7LH | 33 - MORRISONS PHARMACY - N22 6BH | 52 - SAIGRACE PHARMACY - N8 9BG |
| 8 - BOOTS - N15 4QD | 34 - MUSWELL HILL PHARMACY - N10 3HN | 54 - SANTAS PHARMACY - N4 3RN |
| 12 - CLOCKWORK PHARMACY - N11 2DN | 39 - PHARMACY EXPRESS - N22 8HH | 58 - THE CADGE PHARMACY - N15 4JR |
| 13 - COOPERS PHARMACY - N15 4DJ | 41 - PHARMOCARE - N17 6GB | |
| 15 - CROSS CHEMIST - N22 5DJ | 42 - PHARMOCARE - N17 6SB | |

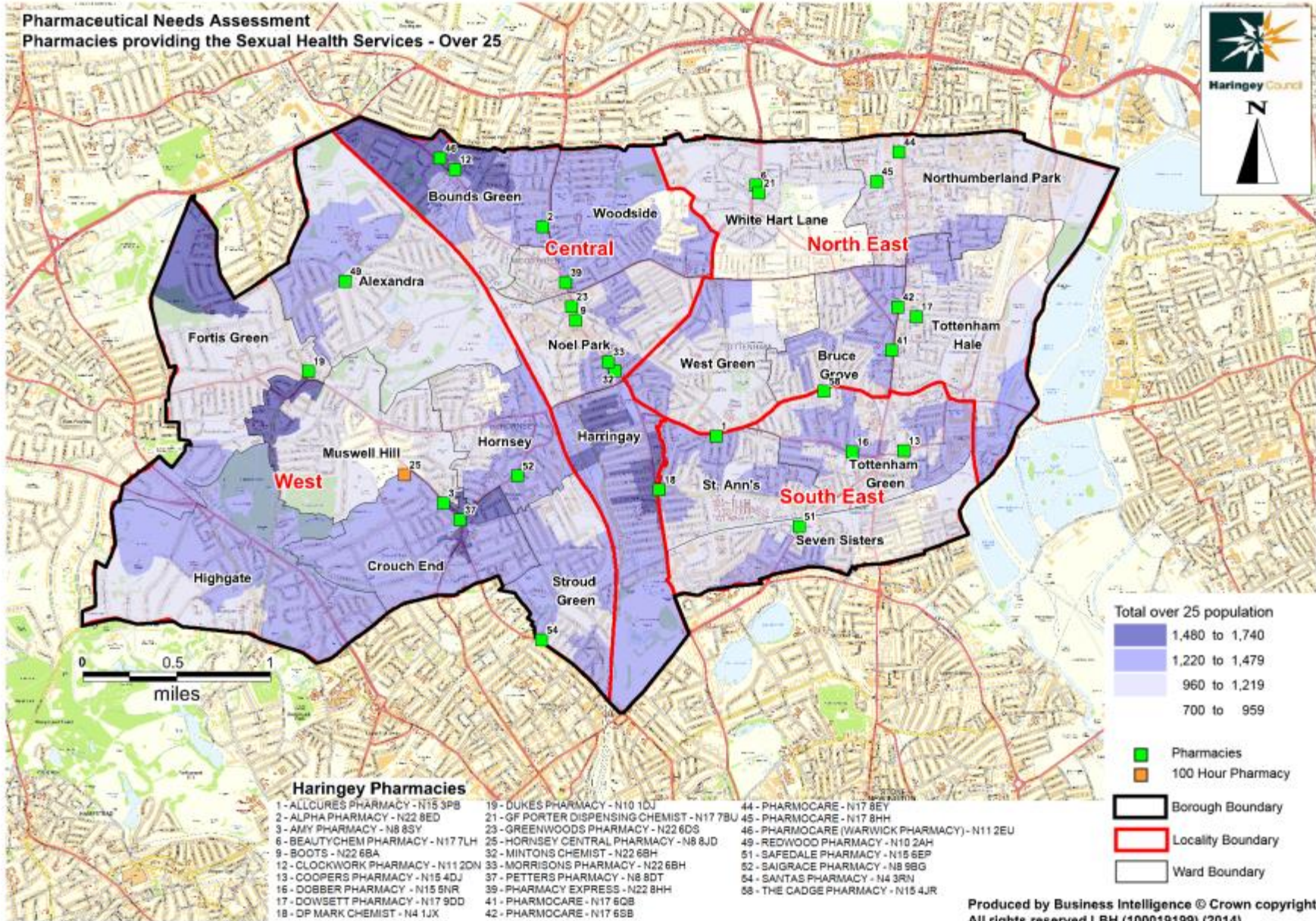
Pharmaceutical Needs Assessment
Pharmacies providing the Sexual Health Services - Under 25



Haringey Pharmacies

- | | | |
|-----------------------------------|--|--|
| 1 - ALLCURES PHARMACY - N15 3PB | 18 - DP MARK CHEMIST - N4 1JX | 45 - PHARMOCARE - N17 8HH |
| 2 - ALPHA PHARMACY - N22 8ED | 20 - FROST & Co - N8 7PS | 46 - PHARMOCARE (WARWICK PHARMACY) - N11 2EU |
| 3 - AMY PHARMACY - N8 8SY | 25 - HORNSEY CENTRAL PHARMACY - N8 8JD | 49 - REDWOOD PHARMACY - N10 2AH |
| 4 - AVENUE PHARMACY - N8 0DU | 32 - MINTONS CHEMIST - N22 6BH | 51 - SAFEDALE PHARMACY - N15 6EP |
| 6 - BEAUTYCHEM PHARMACY - N17 7LH | 33 - MORRISONS PHARMACY - N22 6BH | 52 - SAIGRACE PHARMACY - N8 9BG |
| 8 - BOOTS - N15 4QD | 34 - MUSWELL HILL PHARMACY - N10 3HN | 54 - SANTAS PHARMACY - N4 3RN |
| 12 - CLOCKWORK PHARMACY - N11 2DN | 39 - PHARMACY EXPRESS - N22 8HH | 58 - THE CADGE PHARMACY - N15 4JR |
| 13 - COOPERS PHARMACY - N15 4DJ | 41 - PHARMOCARE - N17 6QB | |
| 15 - CROSS CHEMIST - N22 5DJ | 42 - PHARMOCARE - N17 6SB | |

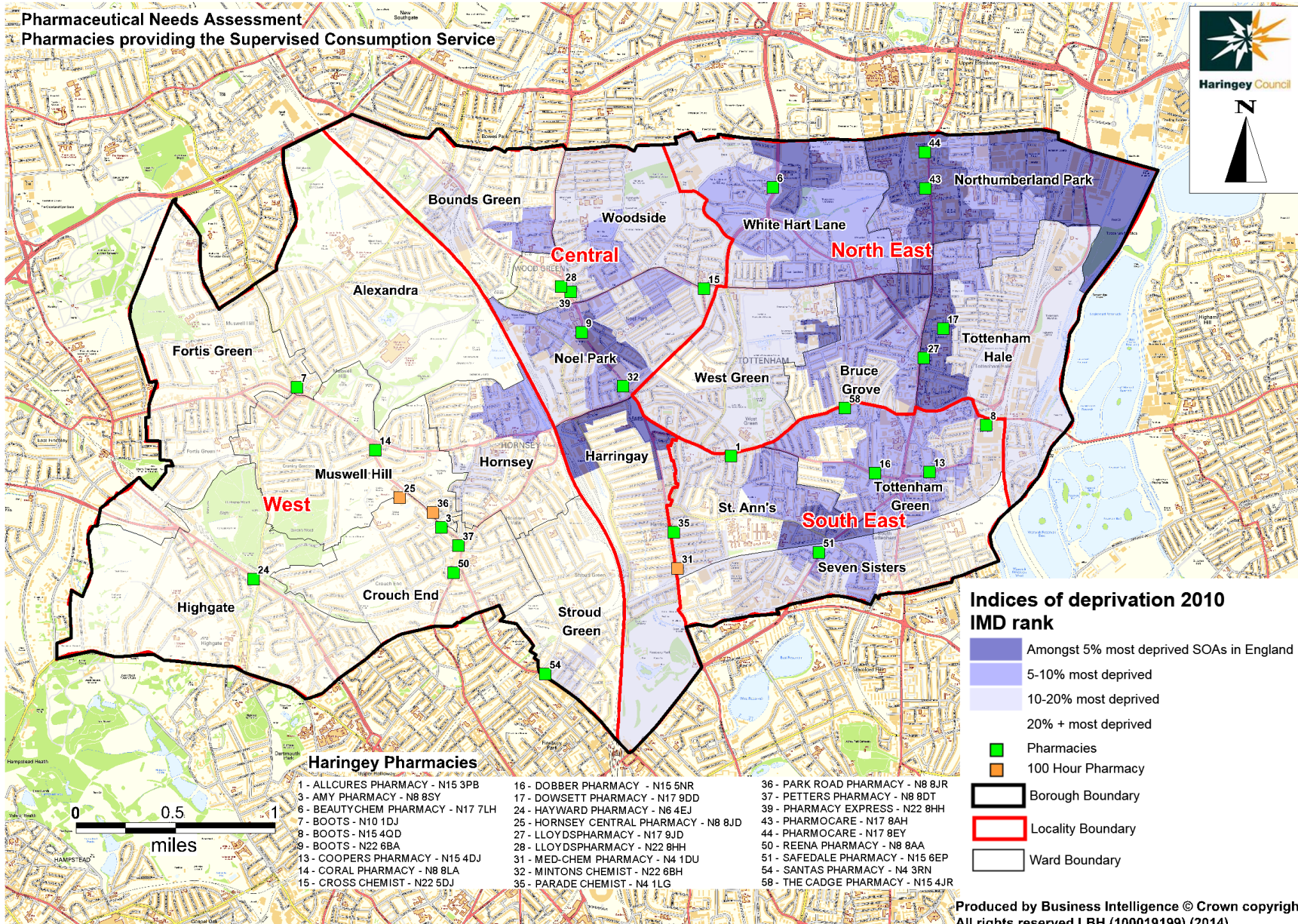
**Pharmaceutical Needs Assessment
Pharmacies providing the Sexual Health Services - Over 25**



Haringey Pharmacies

- | | | |
|-----------------------------------|---|--|
| 1 - ALLCURES PHARMACY - N15 3PB | 19 - DUKES PHARMACY - N10 1QJ | 44 - PHARMOCARE - N17 8EY |
| 2 - ALPHA PHARMACY - N22 8ED | 21 - GF PORTER DISPENSING CHEMIST - N17 7BU | 45 - PHARMOCARE - N17 8HH |
| 3 - AMY PHARMACY - N8 8SY | 23 - GREENWOODS PHARMACY - N22 6DS | 46 - PHARMOCARE (WARWICK PHARMACY) - N11 2EU |
| 6 - BEAUTYCHEM PHARMACY - N17 7LH | 25 - HORNSEY CENTRAL PHARMACY - N8 8JD | 49 - REDWOOD PHARMACY - N10 2AH |
| 9 - BOOTS - N22 6BA | 32 - MINTONS CHEMIST - N22 6BH | 51 - SAIFDALE PHARMACY - N15 8EP |
| 12 - CLOCKWORK PHARMACY - N11 2DN | 33 - MORRISONS PHARMACY - N22 6BH | 52 - SAIGRACE PHARMACY - N8 9BG |
| 13 - COOPERS PHARMACY - N15 4DJ | 37 - PETERS PHARMACY - N8 8DT | 54 - SANTAS PHARMACY - N4 3RN |
| 16 - DOBBER PHARMACY - N15 5NR | 39 - PHARMACY EXPRESS - N22 8HH | 58 - THE CADGE PHARMACY - N15 4JR |
| 17 - DOWSETT PHARMACY - N17 9DD | 41 - PHARMOCARE - N17 6QB | |
| 18 - DP MARK CHEMIST - N4 1JX | 42 - PHARMOCARE - N17 6SB | |

Pharmaceutical Needs Assessment
Pharmacies providing the Supervised Consumption Service



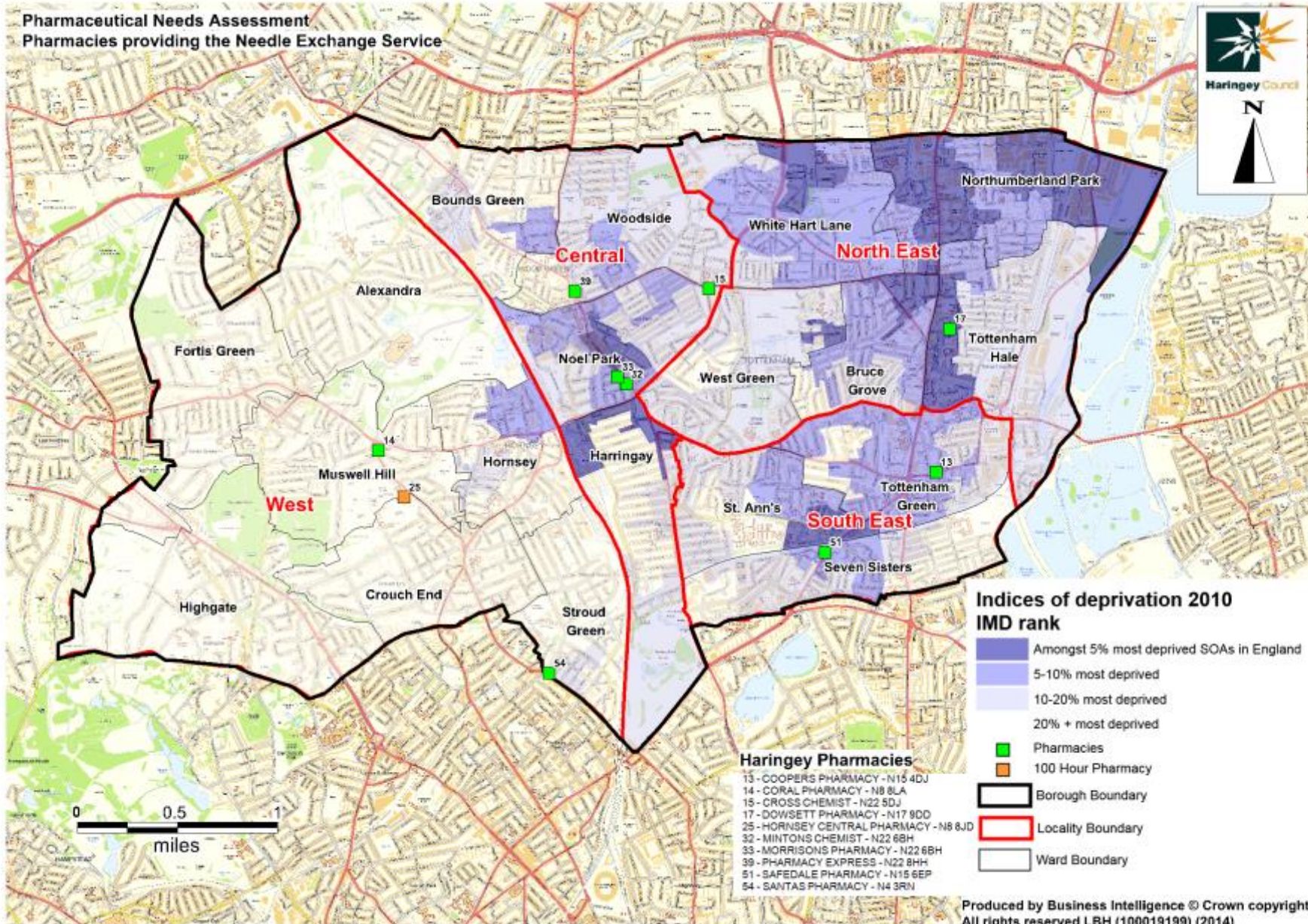
Indices of deprivation 2010
IMD rank

- Amongst 5% most deprived SOAs in England
- 5-10% most deprived
- 10-20% most deprived
- 20% + most deprived
- Pharmacies
- 100 Hour Pharmacy
- Borough Boundary
- Locality Boundary
- Ward Boundary

Haringey Pharmacies

- | | | |
|-----------------------------------|--|-----------------------------------|
| 1 - ALLCURES PHARMACY - N15 3PB | 16 - DOBBER PHARMACY - N15 5NR | 36 - PARK ROAD PHARMACY - N8 8JR |
| 3 - AMY PHARMACY - N8 8SY | 17 - DOWSETT PHARMACY - N17 9DD | 37 - PETERS PHARMACY - N8 8DT |
| 6 - BEAUTYCHEM PHARMACY - N17 7LH | 24 - HAYWARD PHARMACY - N6 4EJ | 39 - PHARMACY EXPRESS - N22 8HH |
| 7 - BOOTS - N10 1DJ | 25 - HORNSEY CENTRAL PHARMACY - N8 8JD | 43 - PHARMOCARE - N17 8AH |
| 8 - BOOTS - N15 4QD | 27 - LLOYDSPHARMACY - N17 9JD | 44 - PHARMOCARE - N17 8EY |
| 9 - BOOTS - N22 6BA | 28 - LLOYDSPHARMACY - N22 8HH | 50 - REENA PHARMACY - N8 8AA |
| 13 - COOPERS PHARMACY - N15 4DJ | 31 - MED-CHEM PHARMACY - N4 1DU | 51 - SAFEDALE PHARMACY - N15 6EP |
| 14 - CORAL PHARMACY - N8 8LA | 32 - MINTONS CHEMIST - N22 6BH | 54 - SANTAS PHARMACY - N4 3RN |
| 15 - CROSS CHEMIST - N22 5DJ | 35 - PARADE CHEMIST - N4 1LG | 58 - THE CADGE PHARMACY - N15 4JR |

Pharmaceutical Needs Assessment
Pharmacies providing the Needle Exchange Service



**Indices of deprivation 2010
IMD rank**

- Amongst 5% most deprived SOAs in England
- 5-10% most deprived
- 10-20% most deprived
- 20% + most deprived
- Pharmacies
- 100 Hour Pharmacy
- Borough Boundary
- Locality Boundary
- Ward Boundary

- Haringey Pharmacies**
- 13 - COOPERS PHARMACY - N15 4DJ
 - 14 - CORAL PHARMACY - N8 8LA
 - 15 - CROSS CHEMIST - N22 5DJ
 - 17 - DOWSETT PHARMACY - N17 9DD
 - 25 - HORNSEY CENTRAL PHARMACY - N8 8JD
 - 32 - MINTONS CHEMIST - N22 6BH
 - 33 - MORRISONS PHARMACY - N22 6BH
 - 39 - PHARMACY EXPRESS - N22 8HH
 - 51 - SAFEDALE PHARMACY - N15 6EP
 - 54 - SANTAS PHARMACY - N4 3RN

Pharmaceutical Needs Assessment
Pharmacies providing the Healthy Start Vitamins Service

